



RHODE
ISLAND

CAPITAL PROJECTS FUND

2025 PERFORMANCE REPORT

This project is being supported, in whole or in part, by federal award number CPFFN00169 awarded to The State of Rhode Island by the U.S. Department of Treasury

Table of Contents

Overview ----- 3

Program Information ----- 6

Broadband Infrastructure Projects Program ----- 7

Executive Summary ----- 8

Uses of Funds ----- 9

Addressing Critical Needs ----- 17

Labor ----- 18

Community Engagement ----- 19

Community Learning Center Municipal Grant Program ----- 21

Executive Summary ----- 22

Uses of Funds ----- 24

Addressing Critical Needs ----- 46

Labor ----- 47

Community Engagement ----- 48

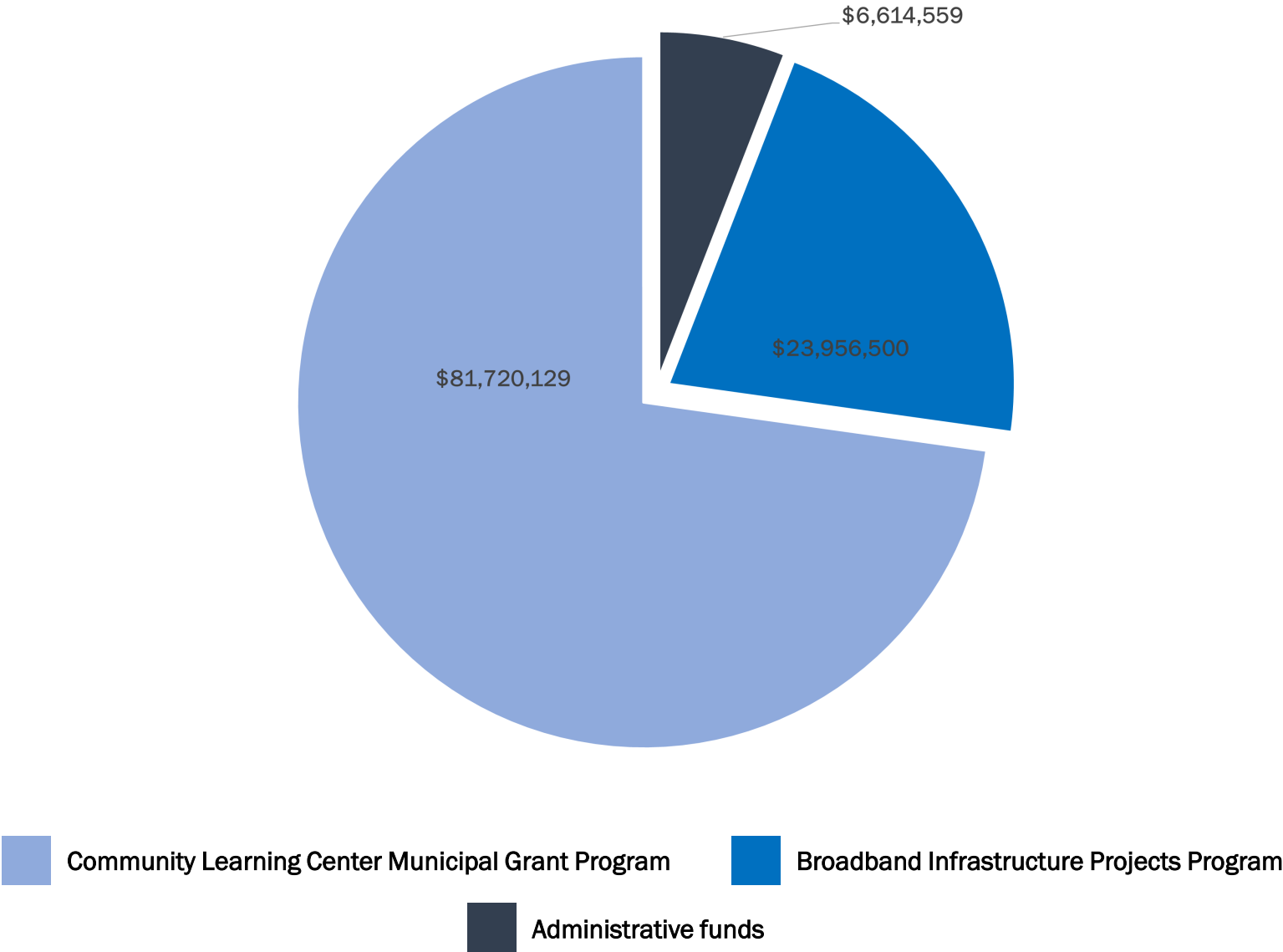
Overview

In accordance with guidance from the U.S. Department of the Treasury, Governor McKee and the Rhode Island General Assembly will deploy the State’s \$112.3 million American Rescue Plan Act (ARPA) Coronavirus Capital Projects Fund (CPF) allocation to invest \$23.9 million in high-quality broadband infrastructure and \$81.7 million for the construction or renovation of multipurpose community facilities that directly and jointly enable work, education, and health monitoring. The remaining \$6.6 million, allocated by the U.S. Department of Treasury as administrative funds, will be used to support the management of CPF and its approved programs. The CPF grant funds will enable the State to make investments in those areas that were impacted or made worse by the COVID-19 pandemic. The State’s Pandemic Recovery Office will administer these funds. This is Rhode Island’s third Performance Report, and it covers both the programs described below.

BROADBAND INFRASTRUCTURE PROJECTS PROGRAM

U.S. Department of Treasury approved the CPF Broadband Infrastructure Projects Program (previously referred to as the ConnectRI Last Mile Grant Program) on March 28, 2023. This program is being implemented by the Rhode Island Executive Office of Commerce acting through the Rhode Island Commerce Corporation (Rhode Island Commerce).

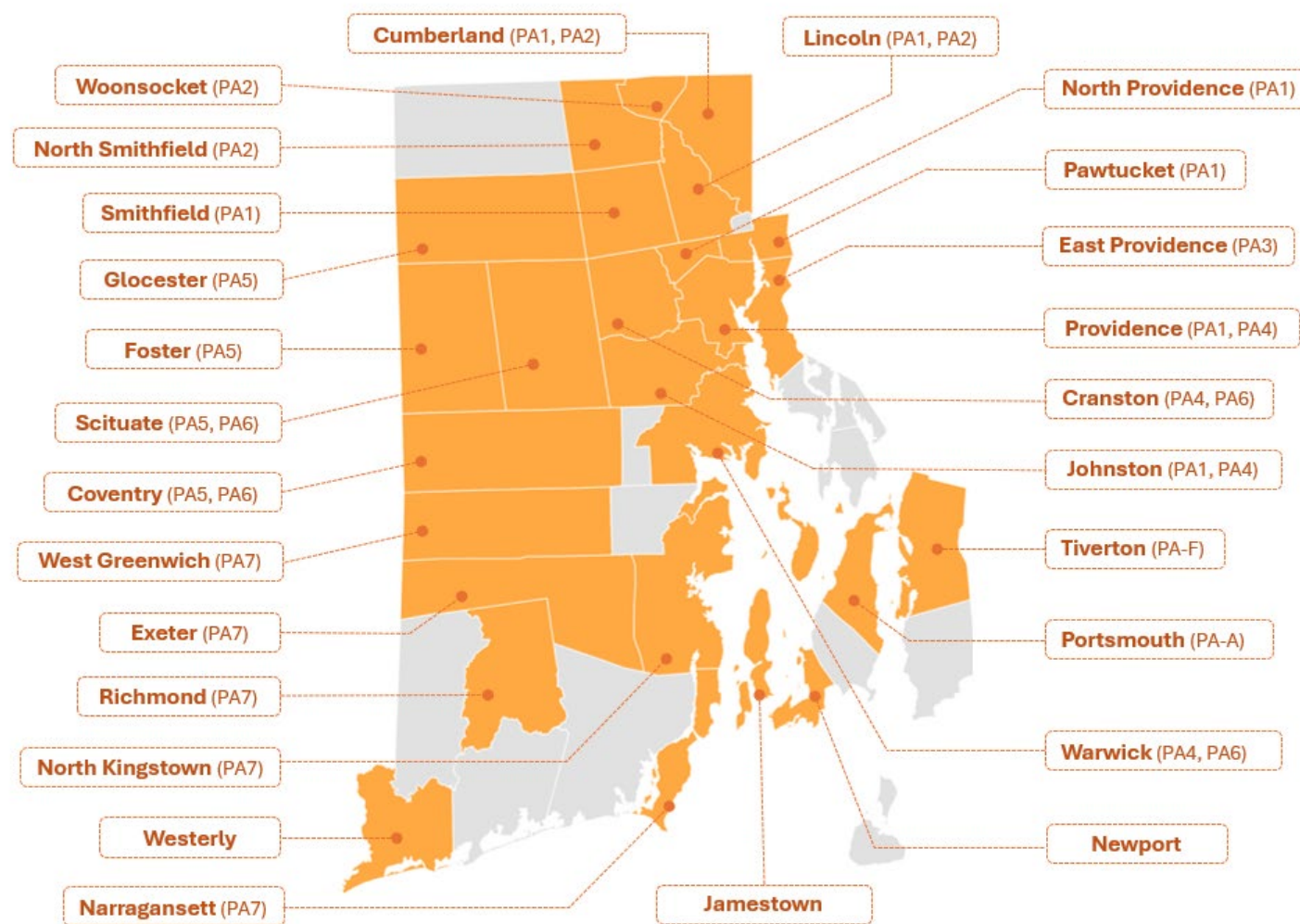
Distribution of Rhode Island’s CPF allocation



Through a multi-round, competitive Request For Proposal (RFP) process, Rhode Island Commerce has selected two vendors, Verizon New England, Inc. (Verizon) and Netspeed, LLC, dba GoNetspeed (GoNetspeed), to provide end-to-end fiber infrastructure to locations that are otherwise unserved or underserved by high-speed internet in 23 municipalities in Rhode Island.

Collectively, these CPF-funded projects will provide fiber internet that reaches speeds of at least 100/100mbps to over 16,000 locations. Due to the significant matching funds provided by the qualifying vendors, the total broadband infrastructure investment is \$51,627,464, which represents a 115.5% increase beyond the original CPF funding amount. As a result, CPF funds are reaching approximately two-thirds more households and small businesses than initially anticipated.

Vendor contracts for all the project areas were signed in the first quarter of 2025, with construction anticipated to begin in Fall 2025. All projects are scheduled for completion by December 31, 2026, consistent with U.S. Treasury requirements.



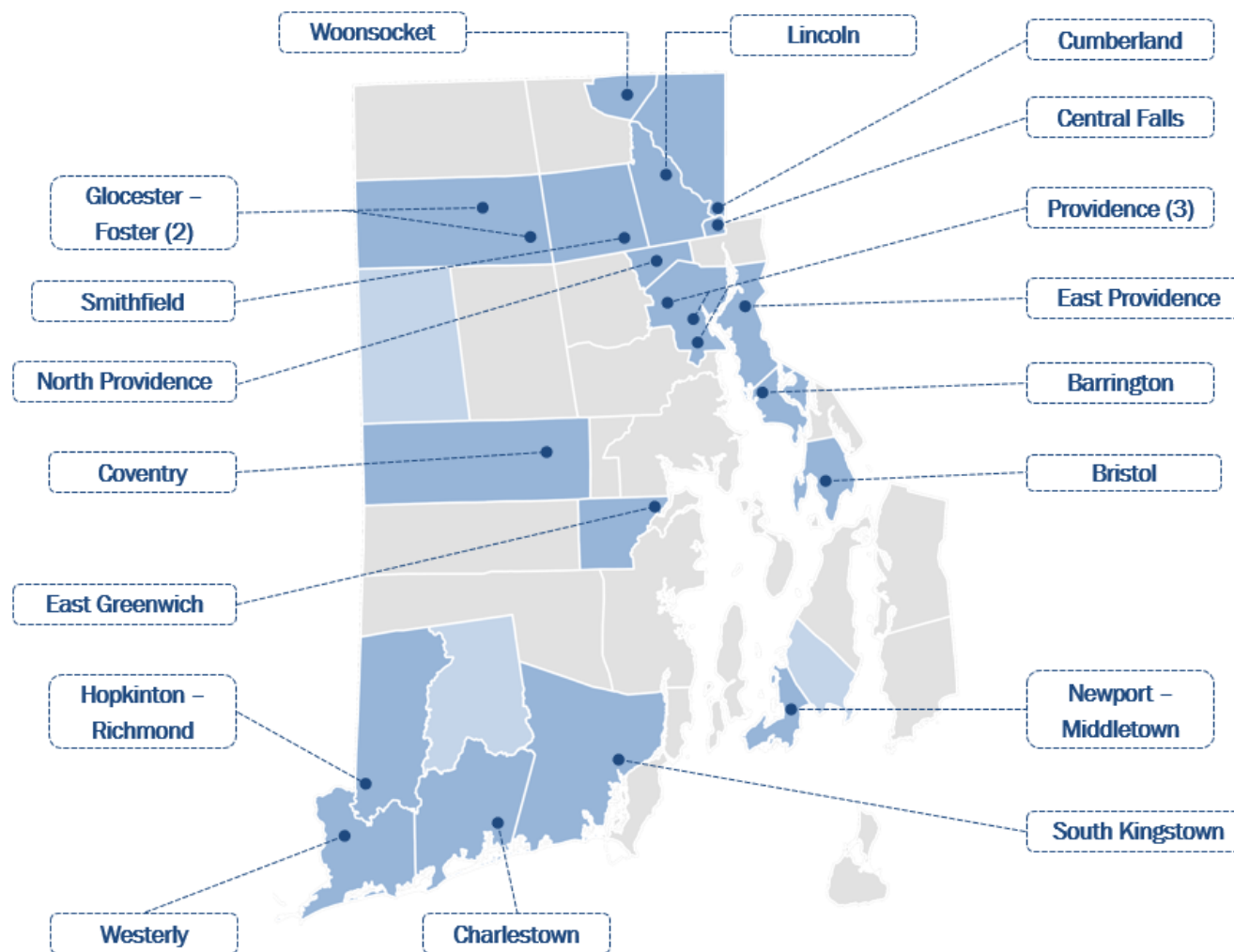
Map developed by Rhode Island Division of Statewide Planning (Source: RIGIS, Esri)

Map of CPF Broadband Infrastructure Project locations (PA: Project Areas)

COMMUNITY LEARNING CENTER MUNICIPAL GRANT

U.S. Treasury approved the CPF Community Learning Center (CLC) Municipal Grant Program (previously referred to as the Multipurpose Community Facility Projects grant program) on July 18, 2023. The Pandemic Recovery Office (PRO) is implementing this grant program. In accordance with a process approved by U.S. Treasury, PRO launched the grant application on August 7, 2023, to invite eligible projects and municipalities to apply for this funding. To be eligible, municipalities committed to the Governor's Learn365RI compact and attested to complying with all Treasury requirements for the project, programs, and grant management. The State entered into subaward agreements with municipalities for projects with fully developed proposals and viable project schedules and budgets. Twenty-one projects in eighteen municipalities have been awarded CPF CLC funds.

Thirteen projects had begun construction by June 30, 2025, with the number rising to eighteen as of the submittal of this report. Several projects will be completed by the end of 2025. The CLC Municipal Grant Program capital projects are required to be completed by October 31, 2026, with a Certificate of Occupancy and Beneficial Use in hand, and to expend all grant funds by December 31, 2026.



Map developed by Rhode Island Division of Statewide Planning (Source: RIGIS, Esri)

Map of CPF Community Learning Center project locations

Program Information

Program Title: **CPF Broadband Infrastructure Projects Program**

Approved Program Plan Number (as provided by Treasury): **111**

Program Start Date: **10/02/2023**

Program End Date: **12/31/2026**

Total CPF Funds Allocated to this Program: **\$23,956,500.00 ***

Program Title: **CPF Community Learning Center Municipal Grant Program**

Approved Program Plan Number (as provided by Treasury): **252**

Program Start Date: **08/03/2023**

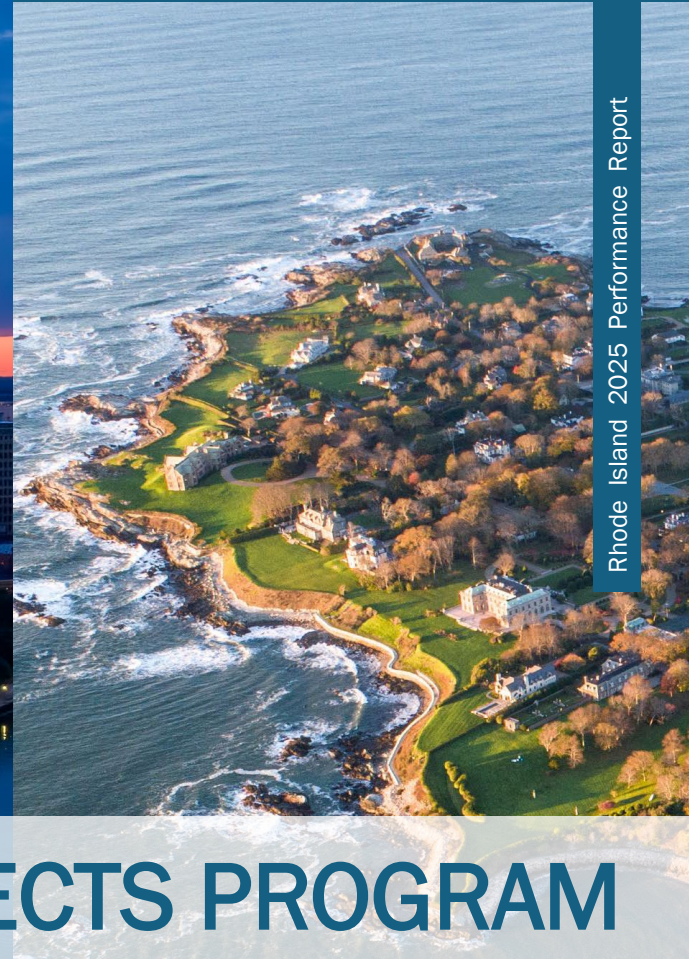
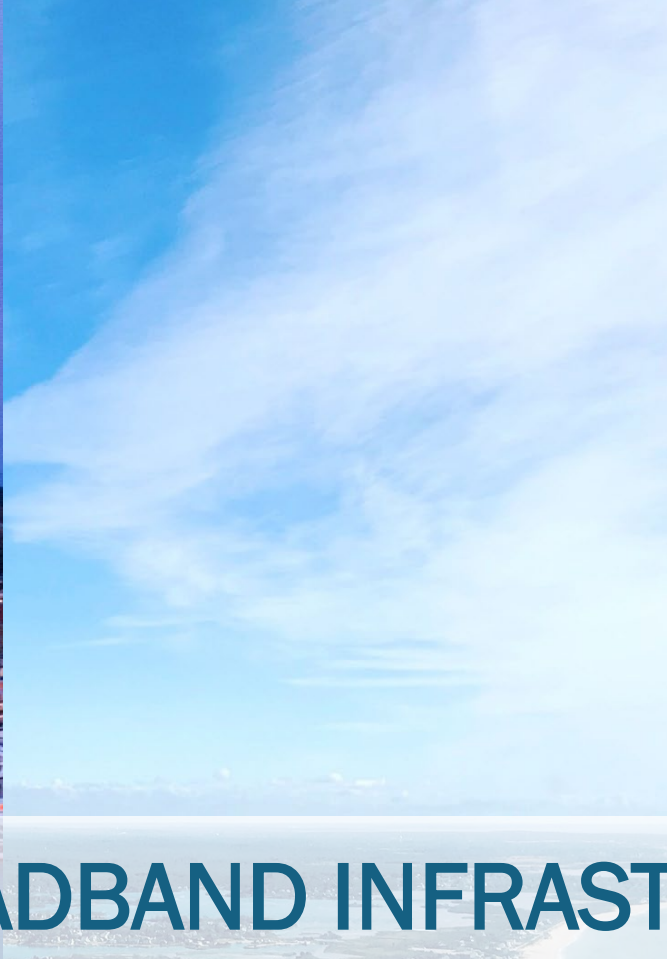
Program End Date: **12/31/2026**

Total CPF Funds Allocated to this Program: **\$81,720,129.55 ***

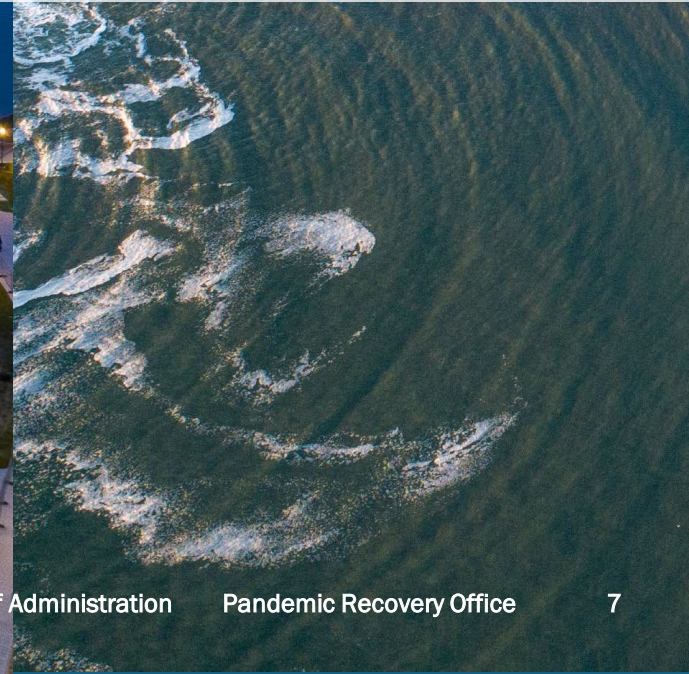
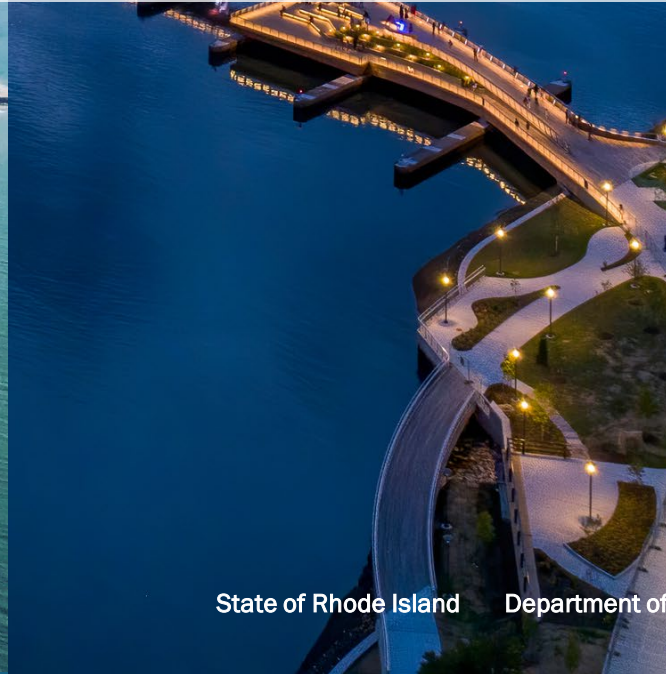
Title: **CPF Administration**

Total CPF Funds Allocated: **\$6,614,559**

** This only reflects the actual CPF program funds. All administrative costs are included in CPF Administration.*



BROADBAND INFRASTRUCTURE PROJECTS PROGRAM



Executive Summary

The State of Rhode Island is using 21% of its Coronavirus Capital Projects Fund (CPF) allocation to invest in last-mile broadband infrastructure to ensure all Rhode Islanders have access to high-speed, reliable internet, which is vital for education, healthcare, economic development and communication in the digital age.

Rhode Island has set the following goal:

Leverage a best-in-class, resilient, sustainable, and scalable broadband infrastructure to propel the state's 21st century economic, education, healthcare, civic and social engagement, and quality of life, by ensuring all Rhode Islanders have access to affordable, accessible, reliable high-speed internet in their homes, at their places of employment, and at public facilities by 2027.

To support this goal, Rhode Island will leverage CPF dollars to directly support broadband infrastructure projects in the state through the CPF Broadband Infrastructure Projects Program plan, which was approved by U.S. Treasury on May 21, 2024, with additional amendments approved in September 2024 and December 2024. This program is being implemented by the State's Executive Office of Commerce acting through the Rhode Island Commerce Corporation (Rhode Island Commerce).

Specifically, the Rhode Island Commerce will use CPF funding to do two things:

- Improve speed, resilience, and latency of current last-mile networks by ensuring such networks can support 100/100 Mbps average real speeds for all users, and is scalable to 1/1 Gbps, with a latency equal to or less than 100 milliseconds. If it is determined to be impracticable for a project to deliver services at 100/100 Mbps due to geography, topography, or excessive cost, the proposed project must be designed so that it reliably meets or exceeds 100/20 Mbps and is scalable to a minimum of 100/100 Mbps in the future, and
- Provide affordable broadband access to homes and businesses. For the CPF Broadband Infrastructure Projects Program, "affordable" is defined as providing a binding commitment to a non-promotional price for the lowest speed tier (100/100 Mbps), as specified by the Proposer, for a period of no less than five (5) years.

The projects will directly support opportunities for Rhode Islanders to use broadband services for work, education, and health monitoring. All projects will be designed to address a critical need of the community that the project will serve.

CPF Program funding (\$23,956,500, or 92.9%) will provide grants for last-mile connections in project areas, which are not currently served by a reliable wireline connection that delivers at least 100 Mbps of download speed and 100 Mbps of upload speed and latency equal to or less than 100 milliseconds. The Rhode Island Commerce issued three separate Requests for Proposals, with vendor selection completed for all 12 project areas as of February 25, 2025. Contracts were signed on March 31, 2025. Verizon and GoNetSpeed were selected to provide end-to-end fiber infrastructure to locations that are otherwise unserved or underserved by high-speed internet in the following 23 communities:

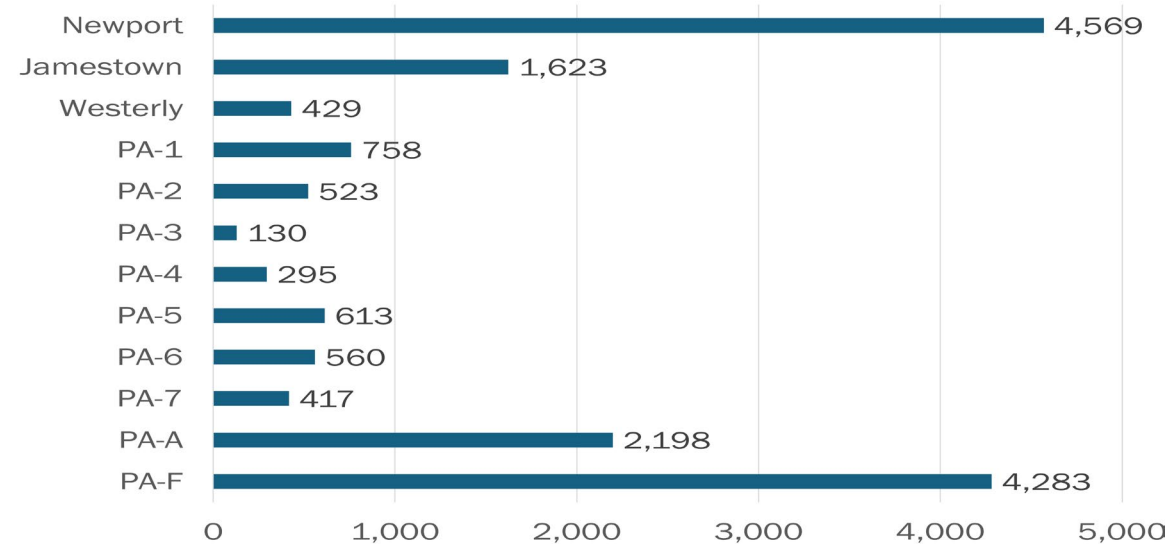
- | | |
|--------------------|------------------|
| • Coventry | • Pawtucket |
| • Cranston | • Portsmouth |
| • Cumberland | • Providence |
| • East Providence | • Richmond |
| • Exeter | • Scituate |
| • Foster | • Smithfield |
| • Jamestown | • Tiverton |
| • Johnston | • Warwick |
| • Lincoln | • West Greenwich |
| • Newport | • Westerly |
| • North Kingstown | • Woonsocket |
| • North Providence | |

Collectively, these CPF-funded projects will provide fiber internet that reaches speeds of at least 100/100mbps to over 16,000* broadband serviceable locations (BSLs). Due to the significant matching funds provided by the qualifying vendors, the total broadband infrastructure investment is \$51,627,464, which represents a 115.5% increase beyond the original CPF funding amount. As a result, CPF funds are leveraging approximately two-thirds more households and small businesses than initially anticipated.

The CPF Broadband Projects are in the design phase, and construction for the all the Project Areas (PA) is anticipated to begin in Quarters 3&4 of CY2025. All CPF broadband projects are targeting substantial completion by December 31, 2026, which will include submission of evidence demonstrating optical power level of project area network segments and evidence of broadband connectivity at eligible locations.

* Total Number of BSLs in each project area subject to change during project implementation.

Project Area (PA)	Municipalities served
Newport	Newport
Jamestown	Jamestown
Westerly	Westerly
PA-1	Cumberland, Johnston, Lincoln, North Providence, Pawtucket, Providence, Smithfield
PA-2	Cumberland, Lincoln, North Smithfield, Woonsocket
PA-3	East Providence
PA-4	Cranston, Johnston, Providence, Warwick
PA-5	Coventry, Foster, Glocester, Scituate
PA-6	Coventry, Cranston, Scituate, Warwick,
PA-7	Exeter, Narragansett, North Kingstown, Richmond, West Greenwich
PA-A	Portsmouth
PA-F	Tiverton



Project Areas (PA) by Broadband Serviceable Locations (BSLs)

Uses of Funds

In alignment with the approved CPF Broadband Infrastructure Projects Program Plan, CPF funds totaling \$23,956,500 will provide subawards for last-mile broadband infrastructure projects to GoNetspeed and Verizon for 12 project areas (PA) that encompass 23 municipalities.

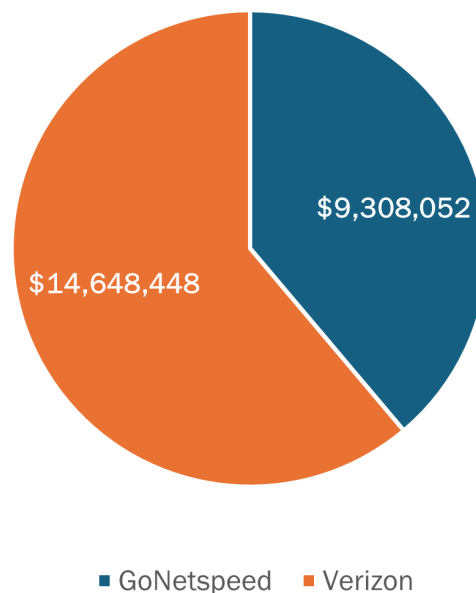
The projects will achieve the following outcomes:

1. Improve speed, resilience, and latency of current last-mile networks by ensuring that such networks can support 100/100 megabits-per-second (“Mbps”) average real speeds, and
2. Provide affordable broadband access to homes and businesses, where “affordable” is defined as providing a binding commitment to a non-promotional price for the lowest speed tier (100/100 Mbps), as specified by the Proposer, for a period of no less than five (5) years.

The vendors were selected through three (3) separate Request for Proposals (RFP) processes executed by Rhode Island Commerce that fully adhered to Rhode Island’s procurement statutes and regulations.

** Total Number of BSLs in each project area subject to change during project implementation.*

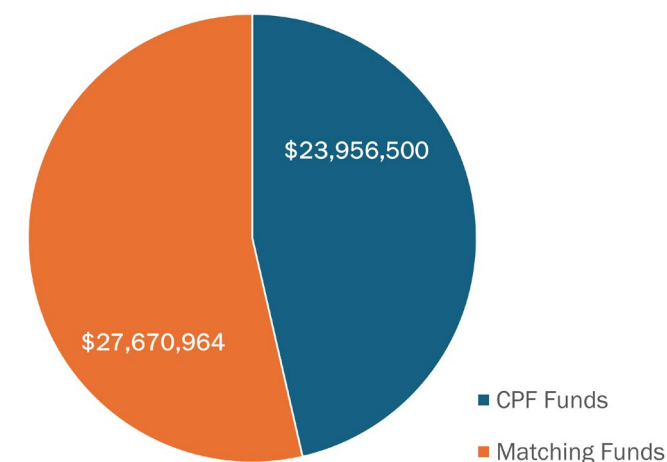
CPF Investment by Vendor



Due to the significant matching funds provided by the selected vendors, the total broadband infrastructure investment is \$51,627,464, which represents a 115.5% increase beyond the original CPF funding amount. As a result, CPF funds are servicing approximately two-thirds more households and small businesses than initially anticipated.

It is anticipated that the CPF investment will improve broadband access for over 16,000 broadband serviceable locations (BSLs) spanning nearly 500 miles.* This is an estimated total cost per BSL of \$3,148 and an estimated subsidy cost per BSL of \$1,461 per location.

Total Anticipated Investment \$51,627,464



Summary of CPF Broadband Infrastructure Deployment

Data as of 6/30/2025

Project Area	# of BSLs	Fiber Miles	CPF Award Amount	Match Amount	Total Cost	Cost/BSL	Subsidy Cost/BSL
Newport	4,569	83	\$9,308,052	\$3,989,165	\$13,297,217	\$2,910	\$2,037
Jamestown	1,623	44	\$2,071,245	\$2,278,669	\$4,349,914	\$2,680	\$1,276
Westerly	429	10	\$1,564,635	\$907,055	\$2,471,690	\$5,762	\$3,647
PA-1	758	45	\$1,560,759	\$2,544,116	\$4,104,875	\$5,415	\$2,059
PA-2	523	26	\$1,150,928	\$1,902,196	\$3,053,124	\$5,838	\$2,201
PA-3	130	6.5	\$474,282	\$710,310	\$1,184,592	\$9,112	\$3,648
PA-4	295	27	\$935,498	\$1,560,135	\$2,495,633	\$8,460	\$3,171
PA-5	613	32	\$635,659	\$1,142,646	\$1,778,305	\$2,901	\$1,037
PA-6	560	18	\$727,579	\$1,181,395	\$1,908,974	\$3,409	\$1,299
PA-7	417	32	\$821,947	\$1,425,428	\$2,247,375	\$5,389	\$1,971
PA-A	2,198	55	\$1,651,334	\$3,066,762	\$4,718,096	\$2,147	\$751
PA-F	4,283	120	\$3,054,582	\$6,963,087	\$10,017,669	\$2,339	\$713
Total	16,398	499	\$23,956,500	\$27,670,964	\$51,627,464	-	-
Average	-	-	-	-	-	\$3,148	\$1,461

* Total Number of BSLs in each project area subject to change during project implementation.

Summary of CPF Broadband Infrastructure Deployment

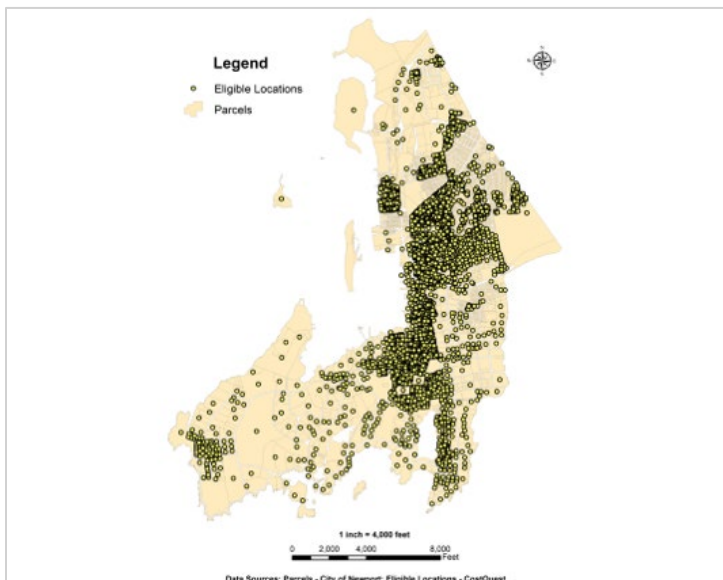
Data as of 6/30/2025

Project Area	Total BSLs*	Business Locations	Community Anchor Institute Locations	Residential Locations†	Housing Units at Residential Locations
Jamestown	1,623	55	0	1,568	1,979
Newport	4,569	464	61	4,044	4,044
Westerly	429	64	1	364	1,018
PA-1	758	134	0	624	1,702
PA-2	523	61	0	462	1,280
PA-3	130	39	0	91	588
PA-4	295	167	3	125	884
PA-5	613	30	0	583	640
PA-6	560	47	1	512	1,159
PA-7	417	102	1	314	701
PA-A	2,198	115	2	2,081	2,839
PA-F	4,283	299	0	3,984	5,789
Total	16,398	1,577	69	14,752	22,623

*Total Number of BSLs in each project area subject to change during project implementation.

† A residential location is defined by the FCC as a location that is or contains “housing units” or “group quarters” based on the U.S. Census Bureau

Broadband Infrastructure Projects Program – Project Areas (PA)



Newport (Newport County)

This project will encompass the construction and deployment of 83 miles of fiber optic network to reach 4,569 unserved and underserved broadband serviceable locations (BSLs).

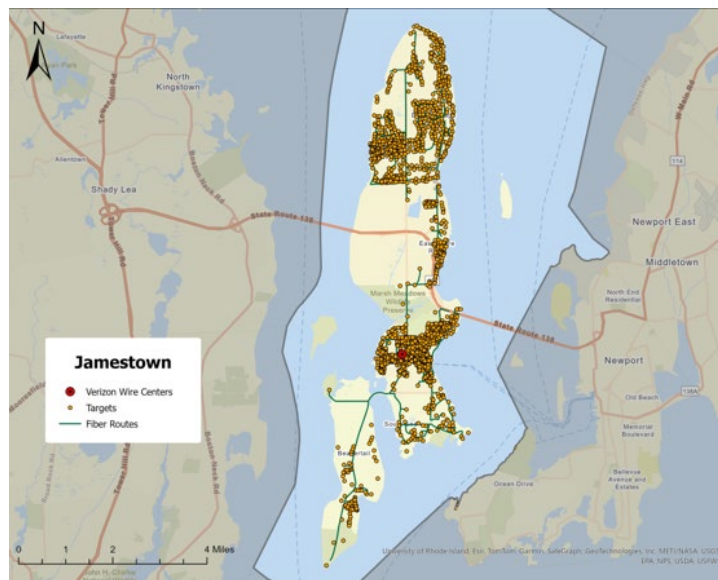
This build will deploy a Gigabit Passive Optical Network (GPON) architecture, supported by a redundant backbone ring design, underground and aerial construction methods.

Vendor: **GoNetspeed**

Total Project Cost: **\$13,297,217**

CPF Funds: **\$9,308,052**

Match: **\$3,989,165**



Jamestown (Newport County)

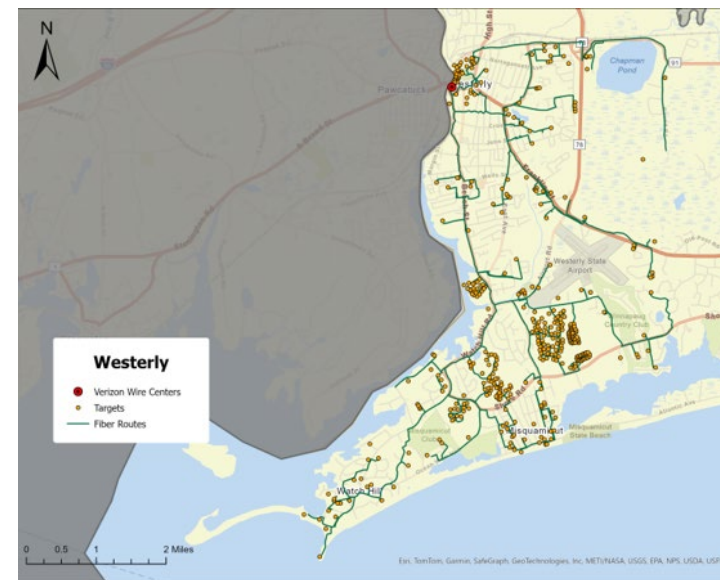
This project consists of building out 44 new fiber optic miles to reach 1,623 underserved locations. The build will include the deployment of a Fiber to the Premises (FTTP) network, including upgraded central office equipment, fiber optic cabling, and optical hubs/splitters.

Vendor: **Verizon**

Total Project Cost: **\$4,349,914**

CPF Funds: **\$2,071,245**

Match: **\$2,278,669**



Westerly (Washington County)

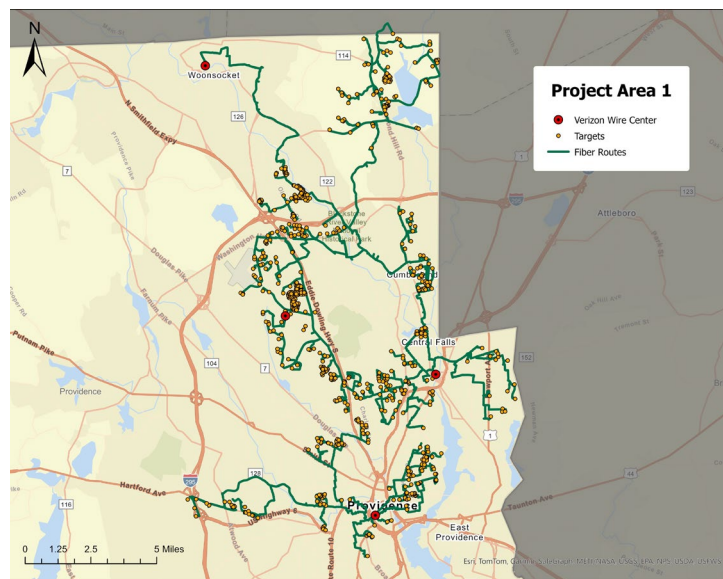
This project consists of building out 10 new fiber optic miles to reach 429 underserved locations. The build will include the deployment of a Fiber to the Premises (FTTP) network, including upgraded central office equipment, fiber optic cabling, and optical hubs/splitters.

Vendor: **Verizon**

Total Project Cost: **\$2,471,690**

CPF Funds: **\$1,564,635**

Match: **\$907,055**



PA-1 (Providence County)

Cumberland, Johnston, Lincoln, North Providence, Pawtucket, Providence, Smithfield

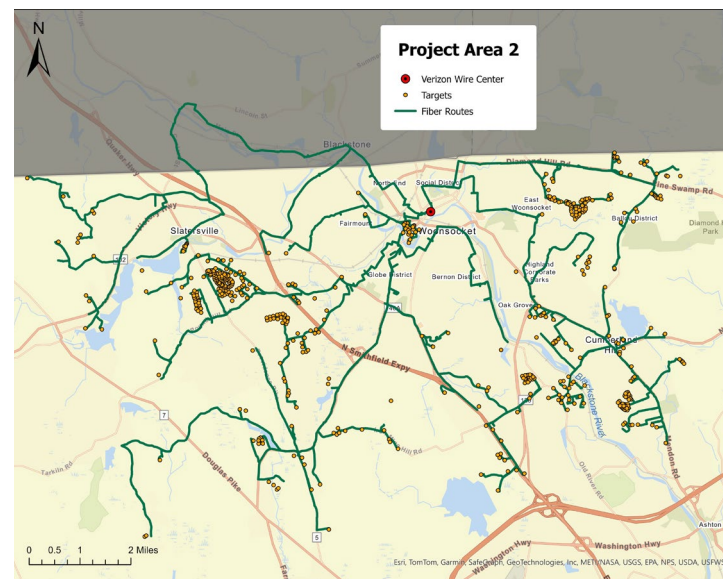
This project consists of building out 45 new fiber optic miles to reach 758 underserved locations. The build will include the deployment of a Fiber to the Premises (FTTP) network, including upgraded central office equipment, fiber optic cabling, and optical hubs/splitters.

Vendor: **Verizon**

Total Project Cost: **\$4,104,875**

CPF Funds: **\$ 1,560,759**

Match: **\$ 2,544,116**



PA-2 (Providence County)

Cumberland, Lincoln, North Smithfield, Woonsocket

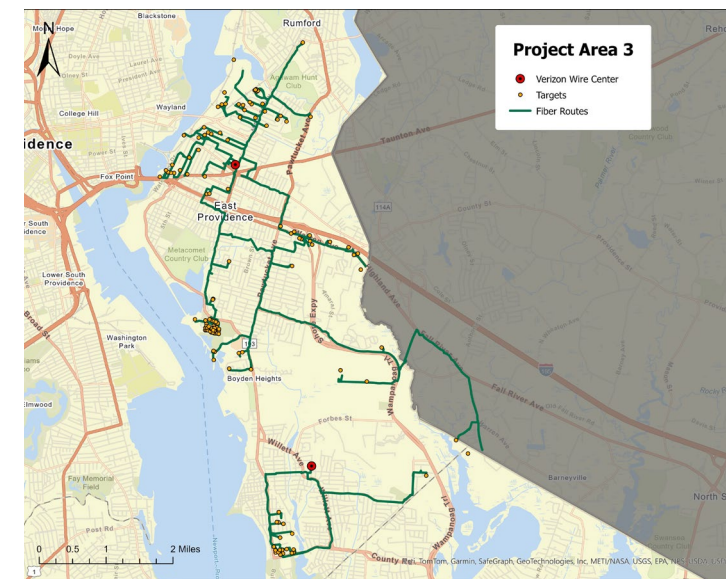
This project consists of building out 26 new fiber optic miles to reach 523 underserved locations. The build will include the deployment of a Fiber to the Premises (FTTP) network, including upgraded central office equipment, fiber optic cabling, and optical hubs/splitters.

Vendor: **Verizon**

Total Project Cost: **\$3,053,124**

CPF Funds: **\$1,150,928**

Match: **\$1,902,196**



PA-3 (Providence County)

East Providence

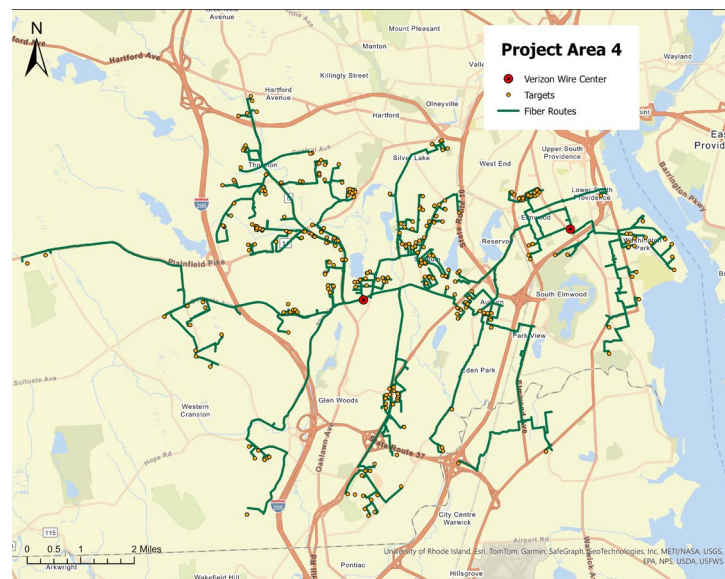
This project consists of building out 6.5 new fiber optic miles to reach 130 underserved locations. The build will include the deployment of a Fiber to the Premises (FTTP) network, including upgraded central office equipment, fiber optic cabling, and optical hubs/splitters.

Vendor: **Verizon**

Total Project Cost: **\$1,184,592**

CPF Funds: **\$474,282**

Match: **\$710,310**



PA- 4 (Providence County, Kent County)

Cranston, Johnston, Providence, Warwick

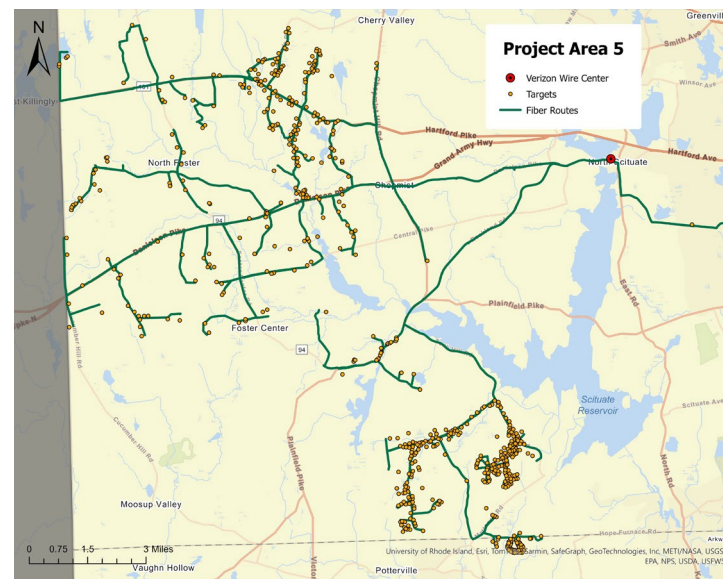
This project consists of building out 27 new fiber optic miles to reach 295 underserved locations. The build will include the deployment of a Fiber to the Premises (FTTP) network, including upgraded central office equipment, fiber optic cabling, and optical hubs/splitters.

Vendor: **Verizon**

Total Project Cost: **\$2,495,633**

CPF Funds: **\$935,498**

Match: **\$1,560,135**



PA-5 (Providence County, Kent County)

Coventry, Foster, Glocester, Scituate

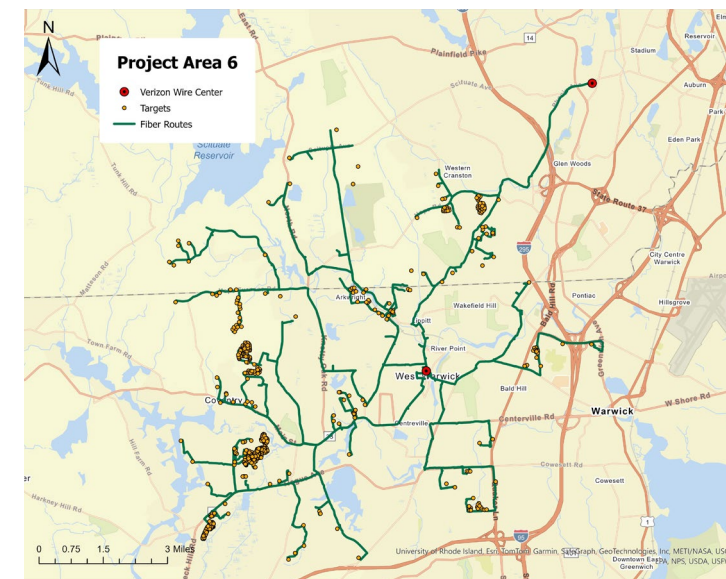
This project consists of building out 32 new fiber optic miles to reach 613 underserved locations. The build will include the deployment of a Fiber to the Premises (FTTP) network, including upgraded central office equipment, fiber optic cabling, and optical hubs/splitters.

Vendor: **Verizon**

Total Project Cost: **\$1,778,305**

CPF Funds: **\$635,659**

Match: **\$1,142,646**



PA-6 (Providence County, Kent County)

Coventry, Cranston, Scituate, Warwick

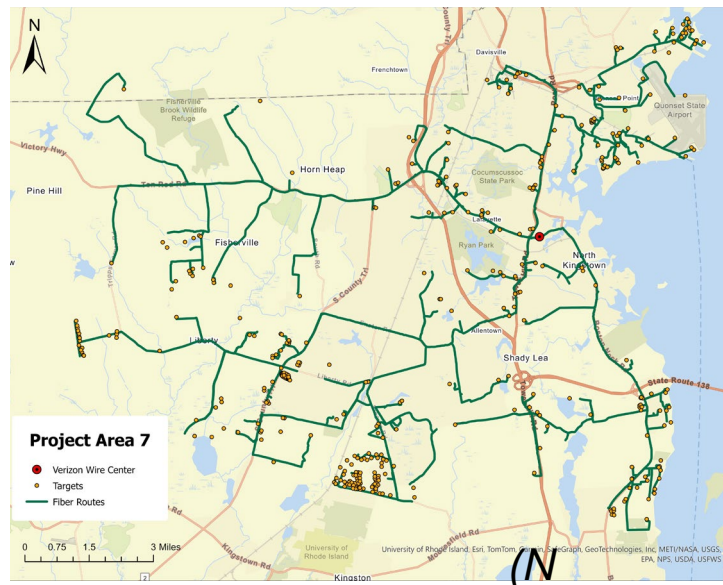
This project consists of building out 18 new fiber optic miles to reach 560 underserved locations. The build will include the deployment of a Fiber to the Premises (FTTP) network, including upgraded central office equipment, fiber optic cabling, and optical hubs/splitters.

Vendor: **Verizon**

Total Project Cost: **\$1,908,974**

CPF Funds: **\$727,579**

Match: **\$1,181,395**



PA-7 (Washington County, Kent County)

**Exeter, Narragansett, North Kingstown,
Richmond, West Greenwich**

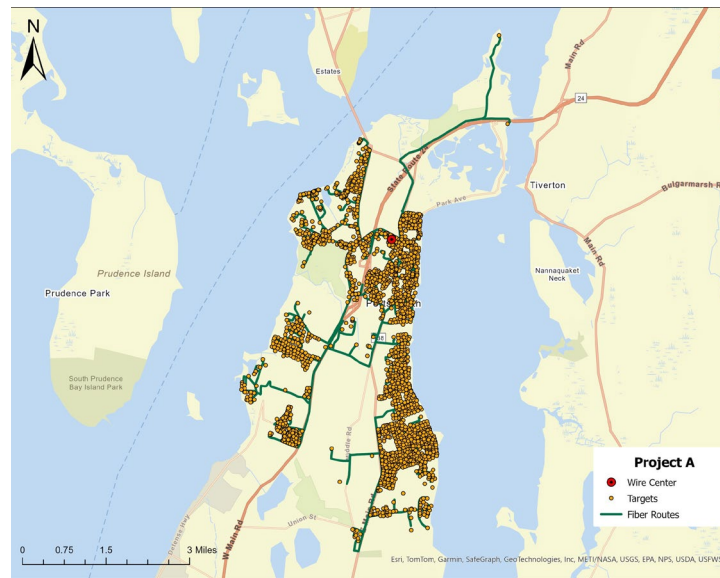
This project consists of building out 32 new fiber optic miles to reach 417 underserved locations. The build will include the deployment of a Fiber to the Premises (FTTP) network, including upgraded central office equipment, fiber optic cabling, and optical hubs/splitters.

Vendor: **Verizon**

Total Project Cost: **\$2,247,375**

CPF Funds: **\$821,947**

Match: **\$1,425,428**



PA-A (Newport County)

Portsmouth

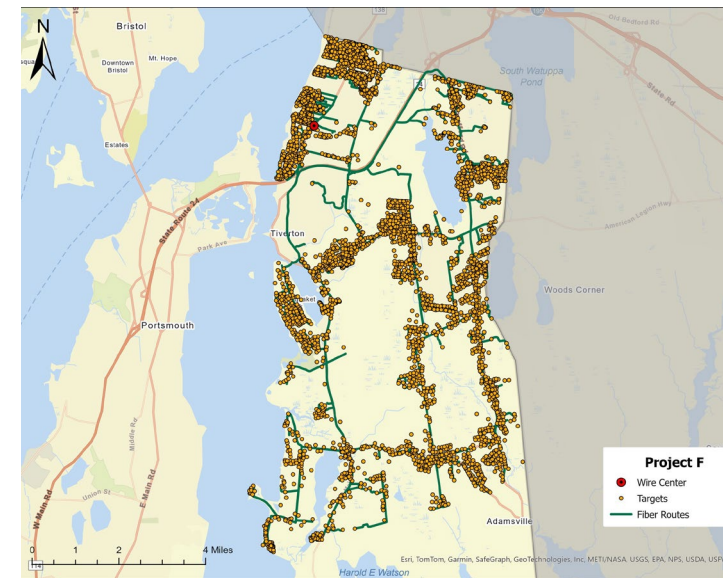
This project consists of building out 55 new fiber optic miles to reach 2,198 underserved locations. The build will include the deployment of a Fiber to the Premises (FTTP) network, including upgraded central office equipment, fiber optic cabling, and optical hubs/splitters.

Vendor: **Verizon**

Total Project Cost: **\$4,718,096**

CPF Funds: **\$1,651,334**

Match: **\$3,066,762**



PA-F (Newport County)

Tiverton

This project consists of building out 120 new fiber optic miles to reach 4,283 underserved locations. The build will include the deployment of a Fiber to the Premises (FTTP) network, including upgraded central office equipment, fiber optic cabling, and optical hubs/splitters.

Vendor: **Verizon**

Total Project Cost: **\$10,017,669**

CPF Funds: **\$3,054,582**

Match: **\$6,963,087**

Addressing Critical Needs

Treasury encourages uses of CPF funds that promote growth in communities with a critical need, such as high-poverty and rural areas. Consistent with this goal, the CPF Broadband Infrastructure Projects Program will adhere to the following principles:

- Rhode Island Commerce will promote and engage with communities lacking broadband access with a focus on households with incomes at or below 150 percent of the federal poverty line.
- To address affordability as a barrier to broadband adoption, Rhode Island Commerce will make every effort to ensure that broadband service options offered by program recipients are affordable to their target markets in the proposed service area based on median household income.

All qualifying proposals during each round of the CPF Requests For Proposal were required to commit that the non-promotional price of the lowest cost broadband service plan that delivers at least 100/100 Mbps (inclusive of all taxes, fees, and charges) must not exceed \$53.09 per month, which is 2 percent of the lower limit of the second quintile of monthly Rhode Island Household Income, as reported by the Census Bureau.

GoNetspeed will offer a \$39.99/month option; Verizon committed to a \$49.99 /month plan. Both vendors have committed to providing these rates for a period of five years from the date the projects reach substantial completion, subject to annual inflation adjustments in line with the annual Personal Consumption Expenditures (PCE) Price Index for services excluding energy and housing, as published by U.S. Commerce Bureau of Economic Analysis.

Verizon and GoNetspeed are in the design and pre-deployment stage of their broadband infrastructure projects, which includes the development of community engagement plans that will promote awareness and adoption of broadband access. As part of the executed contracts, vendors are also responsible for demonstrating project completion, including achievement of speeds and access to the community. In partnership with its vendors, the Rhode Island Commerce broadband team will monitor, measure, and oversee the success and impact of each project.

Labor

Consistent with Treasury's goals, the CPF Broadband Infrastructure Projects Program vendors have committed to consistent labor standards that align with CPF labor guidance and federal requirements. Each contractor is committed to paying prevailing wages, ensuring fair compensation for the workers involved in construction and deployment of the broadband infrastructure. Their workforce practices include the use of skilled labor, compliance with Occupational Safety and Health Administration (OSHA) safety training standards, and enforcement of worker protections in accordance with applicable labor laws.

The executed contracts with Verizon and GoNetspeed include explicit language requiring adherence to strong labor practices. This focus on quality labor helps prevent delays, reduces rework, and minimizes safety incidents, all of which contribute to a more efficient and successful infrastructure deployment. Verizon and GoNetspeed are also dedicated to promoting fair compensation and ensuring that workers receive competitive wages and benefits, which improves worker retention and morale, while also helping to stabilize the workforce and maintain high standards of craftsmanship. As part of their commitment to economic recovery, Verizon and GoNetspeed are utilizing local work forces and prioritizing local hiring wherever possible.

PRO requires all grantees to submit their contract documentation that demonstrates compliance with the requirement for strong labor standards to promote effective and efficient delivery of quality infrastructure projects while also supporting the economic recovery through employment opportunities for workers.

Community Engagement

In 2023, Rhode Island created its Broadband and Digital Equity Strategic Plan, which set the following principles for thoughtful stakeholder and community engagement:

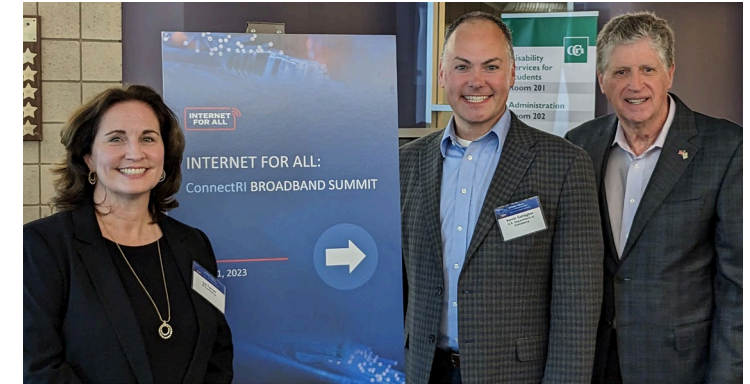
- a) Meet communities where they are,
- b) Enable participatory planning, and
- c) Cultivate strong implementation partnerships.

Between July 2024 and June 2025, the Rhode Island Commerce's broadband team engaged in approximately 65 convenings, meetings, and activities, – prioritizing engagement with unserved and underserved residents – to understand the broadband infrastructure and digital equity needs in the state.

Highlights of these efforts over the past year, included:

- Hosting quarterly meetings of the state's Broadband Advisory Council.
- Organizing and leading a Connecting Communities Committee, which has over 30 members; meetings are held monthly.
- Creating and disseminating a ConnectRI newsletter to share the Corporation's broadband activities and opportunities to get involved.

- Updating and maintaining the Rhode Island Broadband Map that identified unserved and underserved locations in the state, available in both English and Spanish.
- Including community engagement commitments from GoNetspeed and Verizon as part of the Subaward Agreements designed to raise awareness, build trust, and promote equitable access to high-speed internet.



Internet for All Summit in Newport, RI (2023)

Governor Dan McKee and then Secretary of Commerce, Liz Tanner, join Kevin Gallagher, US Department of Commerce, at the state's first Internet for All Conference

In the coming months, GoNetSpeed and Verizon will be developing and submitting community engagement plans that will be designed to meet the needs within each of their project areas. These plans will include specific marketing and communications activities, public awareness and education, and community events – all designed to promote broadband awareness and adoption. The broadband team at Rhode Island Commerce will review and approve the plans and work in partnership with both vendors to maximize the reach and impact of these activities statewide.

Rhode Island Commerce is committed to ensuring full community input to support improved statewide broadband connectivity throughout the duration of the CPF Program and beyond.



Project Kickoff in Newport, RI (2025) Governor Dan McKee, then Secretary of Commerce, Liz Tanner, and the RI Broadband Team join Verizon and GoNetspeed at the CPF Kick-Off Event at the Newport Public Library.

To ensure that state residents are aware of the CPF planned broadband deployment and its positive impact, on May 23, 2025, Governor Dan McKee and Secretary of Commerce Liz Tanner marked the start of the CPF Broadband Infrastructure Projects with a public awareness event at the Newport Public Library in Newport, RI.

During this celebration, Verizon's and GoNetspeed's commitments to addressing the state's much-needed connectivity upgrades were highlighted.



COMMUNITY LEARNING CENTER MUNICIPAL GRANT PROGRAM

Executive Summary

Rhode Island’s ARPA CPF Multipurpose Community Facilities Projects grant program is called the Community Learning Center (CLC) Municipal Grant Program. This grant program is being implemented by the State’s Pandemic Recovery Office (PRO) an office within the Department of Administration and serves as the central office for policy coordination and compliance for federal American Rescue Plan Act programs.

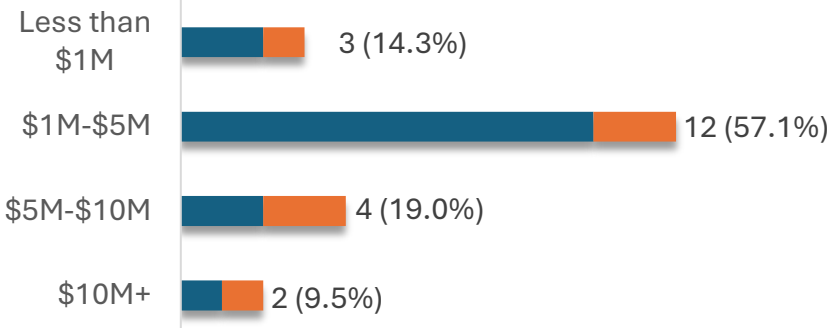
Governor Dan McKee has placed improving educational outcomes, raising incomes, and building a healthier state for all Rhode Islanders, among his top goals. To support these goals, the Administration launched the Learn365RI Initiative, to which all applicants to the CPF CLC Municipal Grant Program were required to sign to be eligible for the program. PRO initiated an application process in August 2023 that allowed municipalities to tailor each project to their community’s needs while committing to offer a minimum of five years’ worth of programming designed to directly and jointly enable education, work, and health monitoring. PRO has awarded \$81.7 million of its CPF allocation for this program. Eighteen municipalities have received grant awards to support 21 community learning center capital projects. Fifteen of these capital projects are renovations of existing structures, including five libraries, and six are new construction projects. Fifteen projects have begun

construction/renovation with the remaining six projects scheduled to start in the Fall 2025. The projects are spread across the state in both rural and urban communities, including one on Aquidneck Island.

To supplement the CPF CLC Municipal Grant Program funding, the McKee Administration has included funding in the state budget via its ARPA State Fiscal Recovery Fund to support programming needs at the community learning centers. This ensures that the community learning centers have funding support to develop comprehensive and robust programming that meets Treasury’s requirements.

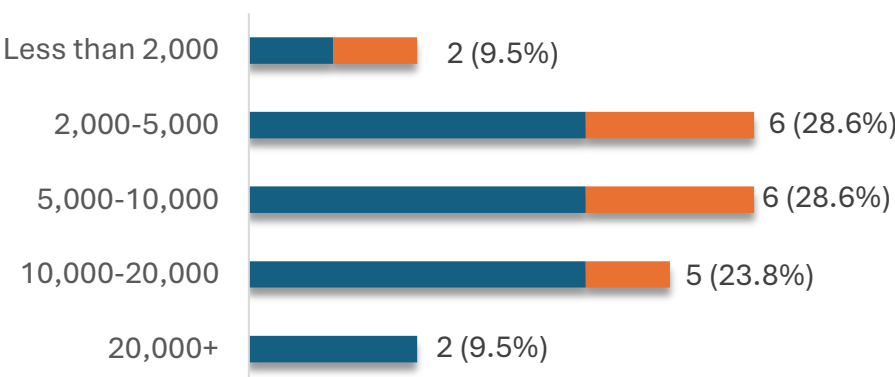
All CPF CLC Municipal Grant Program projects are targeting substantial completion with a Certificate of Occupancy and Beneficial Use in hand by October 31, 2026. This provides each municipality a full two months to operationalize Treasury-compliant programs that directly and jointly enable work, education, and health monitoring by December 31, 2026.

CLCs by Total Project Cost



New Construction
Renovations

CLCs by Project Square Footage



Summary of CPF Community Learning Center Projects

Data as of 6/30/2025

Municipality	Project	Square Footage	Total Project Cost	CPF Award
Barrington	Bay Spring Community Learning Center	2,367	\$1,546,153	\$1,365,591
Bristol	Rogers Free Library Facility Improvements	25,000	\$2,075,900	\$1,971,967
Central Falls	El Centro	19,500	\$13,064,698	\$8,985,198
Charlestown	Cross Mills Public Library	2,450	\$654,597	\$654,597
Coventry	Coventry Community Learning Center	38,500	\$4,777,099	\$4,595,708
Cumberland	Amaral Building And Heritage Park	9,302	\$4,118,159	\$3,118,159
East Greenwich	Swift Community Center †	2,051	\$1,596,800	\$1,596,800
East Providence	East Providence Community Center †	9,803	\$10,493,659	\$10,493,659
Glocester	Harmony Library †	1,080	\$768,988	\$768,988
Glocester	Manton Library	1,320	\$261,259	\$261,259
Hopkinton	Hopkinton Regional Community Center	2,750	\$3,126,385	\$3,126,385
Lincoln	Lincoln Learning Center †	2,600	\$2,000,000	\$2,000,000
Newport	Florence Gray Center	15,700	\$7,527,554	\$7,527,554
North Providence	North Providence Community Center	8,893	\$3,160,894	\$3,160,894
Providence	Davey Lopes Recreation Center	9,000	\$8,661,128	\$8,661,128
Providence	Elmwood Community Center	14,000	\$3,273,872	\$3,273,872
Providence	Joslin Recreation Center	12,830	\$4,265,000	\$4,265,000
Smithfield	East Smithfield Neighborhood Center	6,435	\$2,745,503	\$2,477,323
South Kingstown	Peace Dale Library	4,236	\$3,593,891	\$2,893,891
Westerly	Tower Street Community Center †	8,000	\$6,142,524	\$3,531,655
Woonsocket	Community Learning Center At Cass Park †	14,000	\$6,990,500	\$6,990,500
TOTAL		209,817 sf	\$90,844,563	\$81,720,128

† Indicates project is new construction. All other projects are renovations of existing capital assets.

Uses of Funds

PRO developed a funding formula, approved by U.S. Treasury, based on municipal population and state and municipal per capita income that distributes the \$81.7 million appropriated for the Community Learning Center Municipal Grant Program objectively among participating municipalities.

At the beginning of the application process PRO shared the formula-based allocation with all 39 municipalities in Rhode Island. As the program progressed, there were municipalities who either opted out of the program, were unable to complete a compliant application in time, or whose projects were judged as noncompliant with U.S. Treasury's guidance when reviewed by PRO. In such cases, the allocations of CPF funds for those municipalities that could no longer participate in the Community Learning Center Municipal Grant Program, were reallocated across all other qualifying municipalities based on the Treasury approved formula. Going forward, if any of the current participating municipalities can't move forward with their approved project, their allocation will be redistributed among the remaining participating municipalities that continue with their CPF community learning center projects.

Using the State's grant management system – EUNA, PRO launched an application process on August 7, 2023, that has resulted in subawards for 21 projects in 18 municipalities as of June 30, 2025. The application process was structured so PRO could review and determine eligibility and feasibility of the capital projects proposed prior to moving on to subaward. All applicants who completed the application successfully were approved for subaward agreements. Once the application and review process were completed, PRO conducted on-site reviews with all eligible applicants to initiate the subrecipient monitoring activities and document pre-award conditions of the assets receiving CPF funding.

The CPF CLC Municipal Grant Program funds may be used to purchase, construct, or renovate a community learning center. PRO is adhering to U.S. Treasury's guidance on allowable costs to determine expenses that may be paid for using CPF funds. PRO reviews transaction logs from subrecipients monthly to ensure that CPF funds are covering eligible costs only. Additionally, with each funding request, after the first, grantees are required to share invoices, checks, and other documentation to verify that CPF funds are only used for allowable capital costs.

The following pages present an overview of the CPF CLC Municipal Grant Program projects demonstrating how the program funds are being utilized.

Barrington, RI
Bay Spring Community Learning Center

Status: Under Construction



The Town of Barrington is part of Bristol County in eastern Rhode Island and has a population of 17,153. The Bay Spring Community Learning Center is a renovation of the building located at 170 Narragansett Avenue.

The \$1,365,590.88 of funding from the CPF CLC Municipal Grant Program will support the creation of meeting and office spaces for use by the public, equipped with computers, cameras, microphone and audiovisual technology, and a multipurpose room for community and cultural events.

The Town of Barrington plans to provide assistance with job interviews, online learning,



telehealth, and other community support at the CLC after the project achieves substantial completion.

Substantial completion of the renovation is currently targeted for March 31, 2026.



Image Captions:

Top left: CLC location (●) map with:

— 15 min walking distance

— 15 min cycling distance

Top middle: Project rendering (exterior)

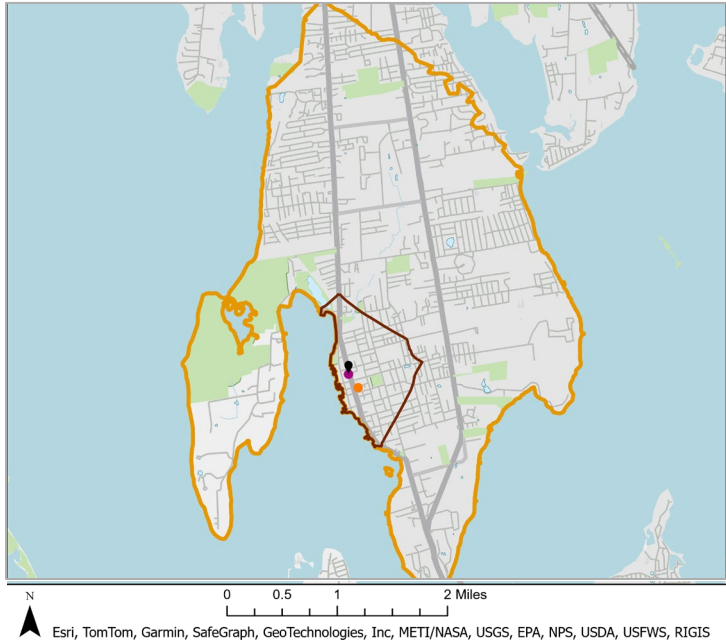
Top right: Pre-renovation interior

● Library

● City Hall

Bristol, RI
Rogers Free Library Facility Improvements

Status: Pre-construction



The Town of Bristol is part of Bristol County in eastern Rhode Island and has a population of 22,493. The Rogers Free Library Community Facility Improvement project is a renovation of the Rogers Free Library, the town’s municipally owned and operated library.

The \$1,971,967 in funding from the CPF CLC Municipal Grant Program will support the creation of a maker space with creative and educational opportunities, private work/study spaces, telemedicine areas, and general improvements to library systems.



Major improvements to library systems include capital investments in HVAC and security systems, both of which are at the end of their useful lives and are currently costing the Town tens of thousands of dollars per year to maintain.

The Rogers Free Library plans to provide at the CLC options for work, education, and health monitoring, including tutoring, résumé assistance, and programming such as discussions on eldercare after the project achieves substantial completion.

Substantial completion of the renovations is currently targeted for April 2026.

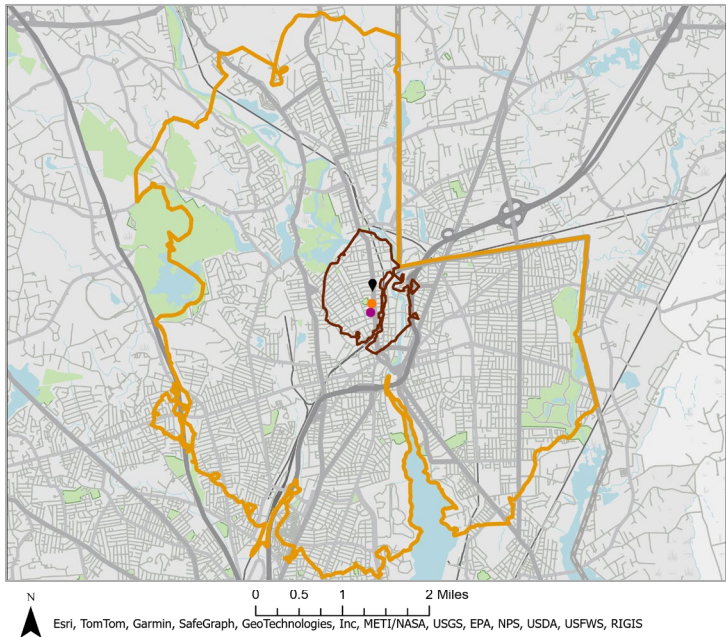


Image Captions:
Top left: CLC location (●) map with:
— 15 min walking distance
— 15 min cycling distance
Top middle: Library exterior
Top right: Rendering of interior meeting space

● Library
● City Hall

Central Falls, RI
El Centro

Status: Pre-Construction



The City of Central Falls is part of Providence County in northern Rhode Island with a population of 22,583. El Centro of Central Falls is a renovation of a 1900s historic building located at 702 Broad Street, Central Falls.

The \$8,985,198 of funding from the CPF CLC Municipal Grant Program will support the creation of a 19,000 square foot community resource center that will accommodate office spaces, a shared market, conference room, assembly space for seniors and youth, and a gym.

Agencies and community partners such as The Elisha Project, Progreso Latino, Tides Family



Services, Family Service of Rhode Island, Parks & Recreation and others plan to provide wellness services, programming for seniors/youth, workforce development, after-school programming, educational programming, and mental health services at the CLC after the project achieves substantial completion.

Substantial completion of the renovations is currently targeted for July 2026.



Image Captions:

Top left: CLC location (●) map with:

— 15 min walking distance

— 15 min cycling distance

Top middle: Project rendering (exterior)

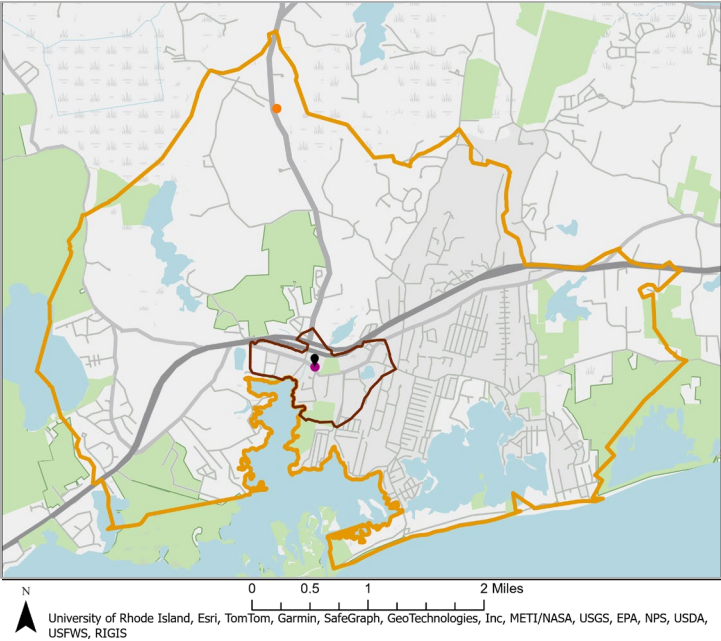
Top right: Pre-renovation interior

● Library

● City Hall

Charlestown, RI
Cross Mills' Public Library Renovations

Status: Pre-construction



Charlestown is part of Washington County in southern Rhode Island and has a population of 7,997. The Cross Mills' Public Library Renovations is a Renovation at the pre-existing Cross Mills' Public Library owned and operated by a private non-profit.

The \$654,597. funding from the ARPA CPF CLC municipal grant will support the renovation of the Cross Mills' Public Library with a Large Meeting Room, 2 individual work rooms and Multiple ADA improvements.

Cross Mills' Public Library plans to provide K-12 afterschool programming and tutoring, literacy



programs, technology training, health monitoring workshops and training, private study space and telehealth access at the CLC after the project achieves substantial completion.

Substantial completion of the renovations is currently targeted for April 2026.



Image Captions:

Top left: CLC location (●) map with:

15 min walking distance

15 min cycling distance

Library

City Hall

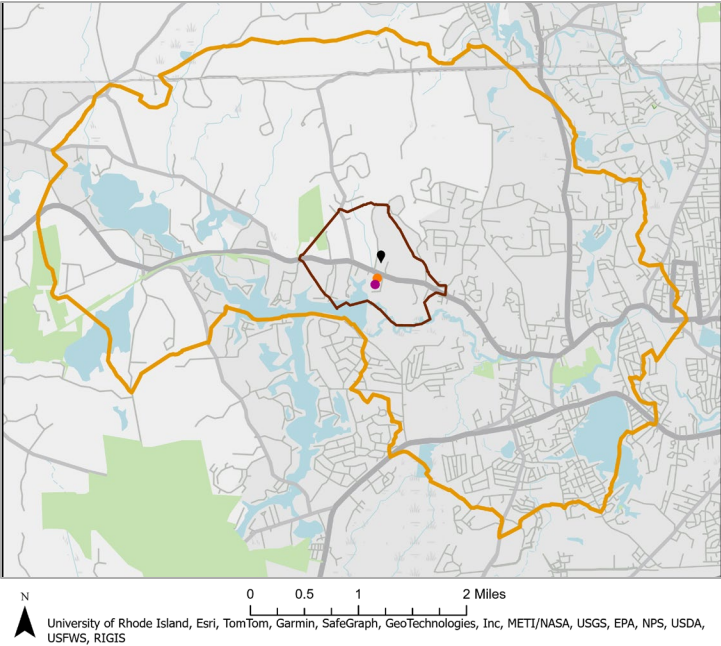
Top middle: Library exterior

Top right: Rendering of interior meeting space

Coventry, RI

Coventry Community Learning Center

Status: Under Construction



The Town of Coventry, with a population of 35,000 residents, is renovating a portion of the existing Town Hall Annex building through the CPF Community Learning Centers Municipal Grant Program.

This 38,550 square foot project funded solely with the CLC Municipal Grant Program allocation of \$4,595,708 includes the rehabilitation of 23 rooms that include: reception area, resource/waiting area, administration offices, programs spaces, career exploration, and supported employment space with mini-computer lab, multi-use training spaces, parent resource area, Community Action Partner’s space, computer



resources, café, library, computer lab and resource/training areas. The renovation will create a Wellness Center that provides a consultation area, waiting room and consultation/examination rooms. The project will rehabilitate existing restrooms to be ADA compliant and construct new restrooms, as well as create a café which will open into the Courtyard Learning Center providing seating and educational areas as part of the landscaped courtyard.

As the largest of the 21 projects statewide the Coventry Community Learning Center is making fast progress to reach its goal of substantial completion in October or November 2025.



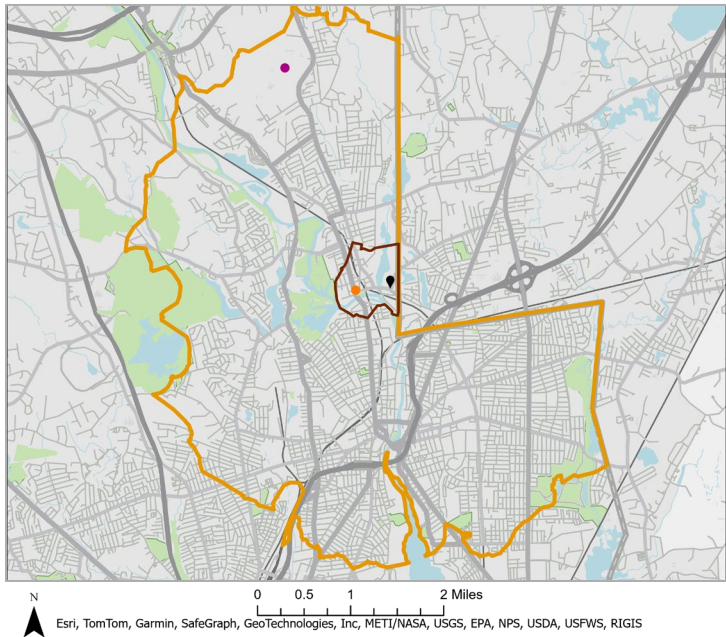
Image Captions:
Top left: CLC location (●) map with:
— 15 min walking distance
— 15 min cycling distance
Top middle: Mid-renovation interior
Top right: Mid-renovation interior – asbestos abatement

● Library
● City Hall

Cumberland, RI

Wellness Hub at the Amaral Building and Valley Falls Heritage Park

Status: Under Construction



The Town of Cumberland is part of Providence County in northeastern Rhode Island and has a population of 37,509. This community learning center renovation project ties together the Amaral Building (2,720 sq ft) and Heritage Park (2.3 acres) on Mill Street.

The \$3,118,159 grant from the CPF CLC Municipal Grant Program funds the adaptive reuse of existing town assets as community resources. This renovation will create an outdoor classroom, flexible learning space, a computer lab, and telehealth and community paramedicine offices.

The Town will provide programs that enable work,



health monitoring, and education. Work enabling programs include professional resume review and writing assistance, series of drop-in mock interview sessions, skills training, and job fairs. Health monitoring enabling programs include inoculations, paramedic-assisted telehealth appointments, blood pressure tests, cholesterol screening, and other preventative care services. Educational programs include after-school peer tutoring, and General Education Development program or English Language Learners courses. These programs will be available at the CLC after the project achieves substantial completion.

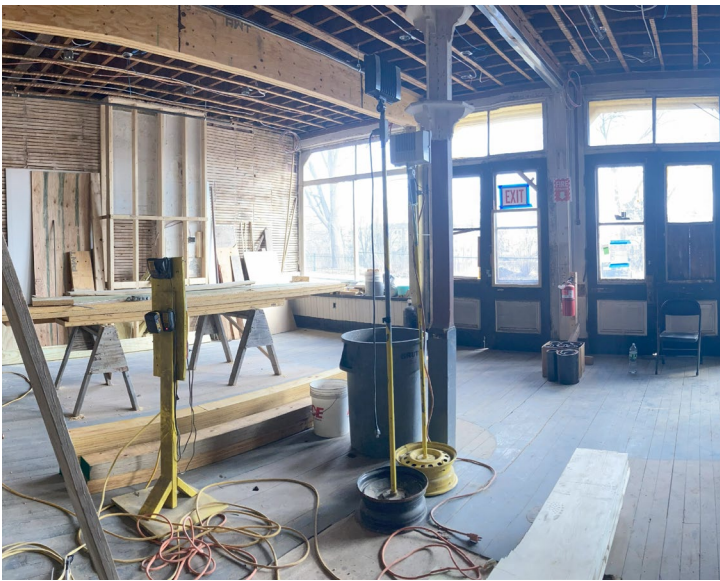


Image Captions:

Top left: CLC location (●) map with:

— 15 min walking distance

— 15 min cycling distance

Top middle: Mid-renovation exterior

Top right: Mid-renovation interior

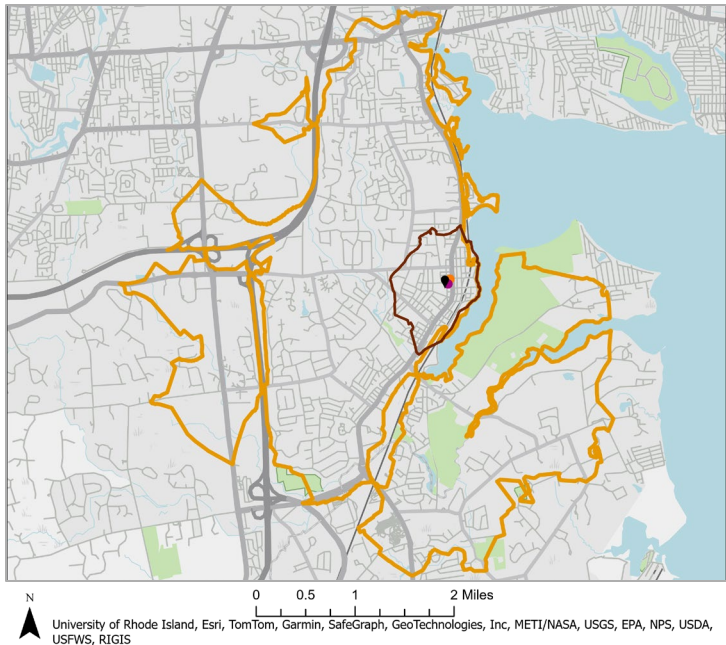
● Library

● City Hall

East Greenwich, RI

Swift Community Center Renovation Project

Status: Under Construction



The Town of East Greenwich is part of Kent County in central Rhode Island and has a population of 14,626. The Swift Community Center Renovation Project is an addition on the north end of the existing Swift Community Center.

The \$1,596,800 of funding from the CPF CLC Municipal Grant Program will support the creation of two multi-purpose classrooms, a dedicated health screening room, a restroom, and three teleconference rooms.

The Town of East Greenwich plans to provide health screenings, workforce trainings, and afterschool education programs at the CLC after



the project achieves substantial completion.

Substantial completion of the addition and other renovations is currently targeted for February 2026.



Image Captions:

Top left: CLC location (●) map with:

— 15 min walking distance

— 15 min cycling distance

● Library

● City Hall

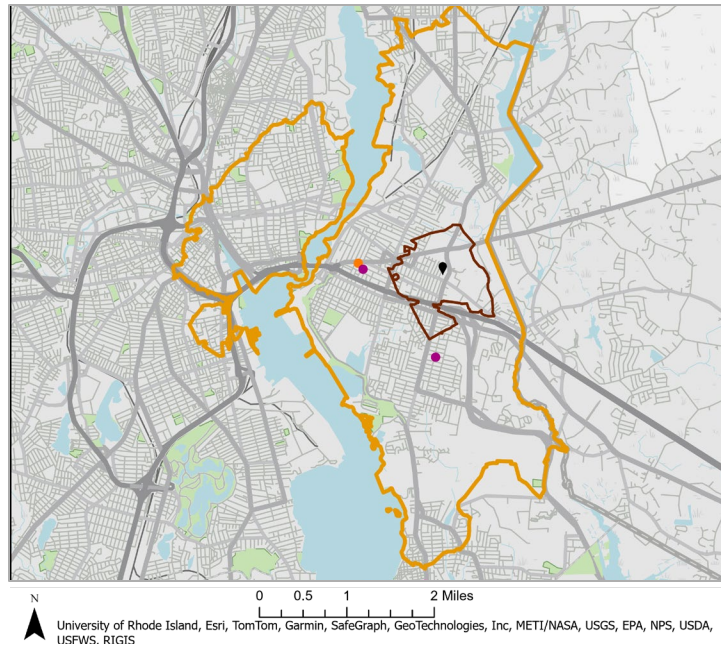
Top middle: Project rendering (exterior)

Top right: Mid-renovation exterior - foundations

East Providence, RI

East Providence Community Center

Status: Under Construction



The City of East Providence is part of Providence County in eastern Rhode Island and has a population of 49,600. The East Providence Community Center is a new construction project located at 610 Waterman Avenue near the East Providence Senior Center.

The \$10,493,659 of funding from the CPF CLC Municipal Grant Program will support the creation of four multipurpose spaces for health, education, and workforce development programming, a health services room and office, three individual spaces for people to take telehealth, education, or workforce development appointments in private, and administration space.



The City of East Providence plans to provide health monitoring services, educational programming including General Education Development program courses, and workforce development programming that connects residents to jobs at the CLC after the project achieves substantial completion.

Substantial completion of the construction of the CLC is currently targeted for October 2026.



Image Captions:

Top left: CLC location (●) map with:

— 15 min walking distance

— 15 min cycling distance

● Library

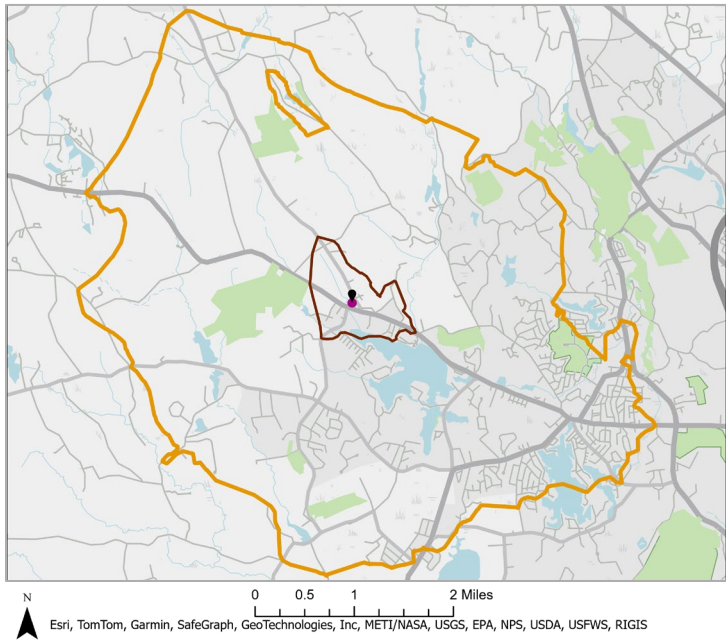
● City Hall

Top middle: Project rendering (exterior)

Top right: Pre-construction site grading

Glocester, RI
Harmony Library Community Addition

Status: Pre-Construction



The Town of Glocester is part of Providence County in northern Rhode Island and has a population of 9,974. The Town of Foster is also part of Providence County and is adjacent to the Town of Glocester. Foster's population is 4,469. The Harmony Library Community Room Addition is a new construction project to build an addition at the Harmony Library, owned and operated by a private non-profit. This project is funded jointly by Glocester and Foster.

The \$768,988 of funding from the CPF CLC Municipal Grant Program will support the creation of a larger community room and three private areas that provide access to telehealth, education, and employment.



The Harmony Library will offer dedicated spaces for telehealth, employment, and education resources. In addition, the library will provide self-care workshops for hypertension, one-on-one assistance for resume writing and job applications, and preschool workshops readying children for kindergarten. These services will be developed with a focus on the needs of the Glocester and Foster communities and will be operational at the CLC after the project achieves substantial completion.

Substantial completion of the addition and all other renovations is currently targeted for September 2026.



Image Captions:

Top left: CLC location (●) map with:

- 15 min walking distance
- 15 min cycling distance

- Library
- City Hall

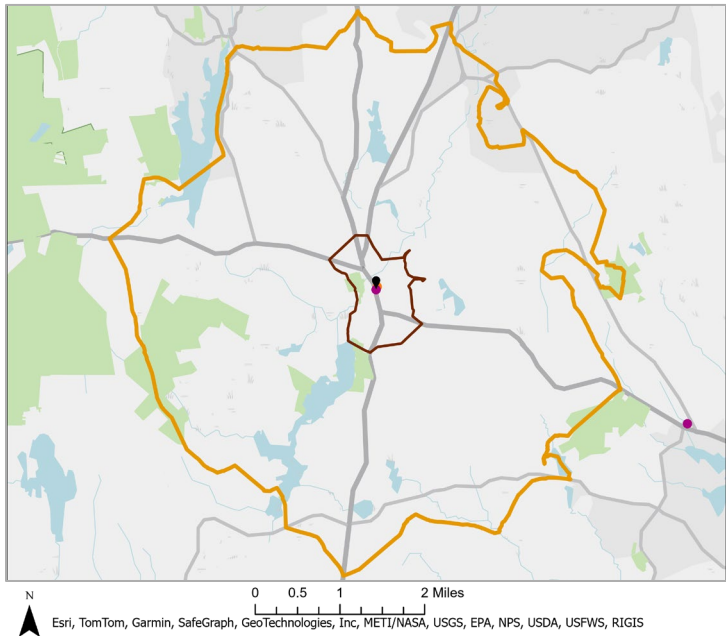
Top middle: Library entrance

Top right: Pre-construction site of library addition

Glocester, RI

Manton Library Community Room and Meeting Rooms

Status: Under Construction



The Town of Glocester is part of the Providence County in northern Rhode Island and has a population of 9,974. The Town of Foster is also part of Providence County and is adjacent to the Town of Glocester. Foster's population is 4,469. The Community Room and Meeting Rooms project is a renovation at the Glocester Manton Library, owned and operated by a private non-profit. This project is funded jointly by Glocester and Foster.

The \$261,259 of funding from the CPF CLC Municipal Grant Program will support the creation of three private rooms and the renovation of a storage area and the community room.



The Glocester Manton Library plans to offer dedicated spaces for telehealth, employment, and education resources.

In addition, the library will provide health monitoring and self-care workshops for hypertension, and assistance with online job applications. These services will be developed with a focus on the needs of the Glocester and Foster communities and will be operational at the CLC after the project achieves substantial completion.

Substantial completion of the renovations is currently targeted for December 2025.



Image Captions:

Top left: CLC location (●) map with:

— 15 min walking distance

— 15 min cycling distance

Top middle: Library entrance

Top right: Mid-renovation interior

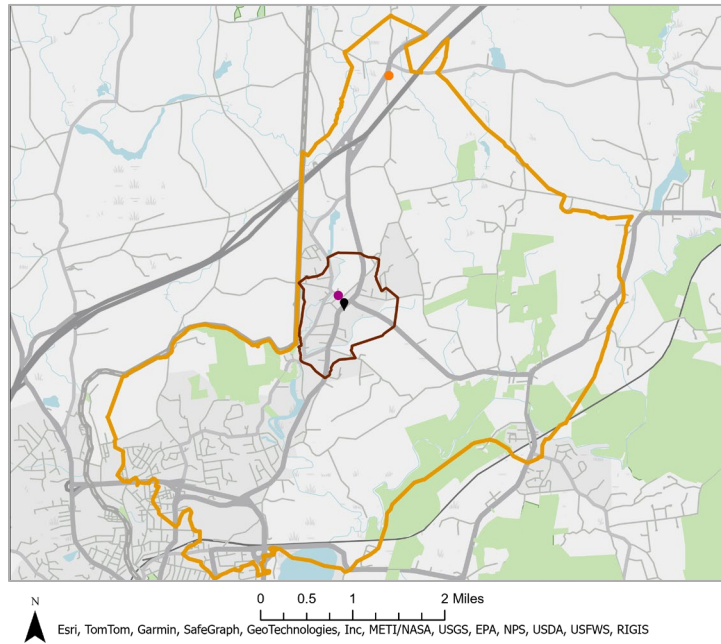
● Library

● City Hall

Hopkinton, RI

Hopkinton Regional Community Center

Status: Under Construction



The Town of Hopkinton is part of Washington County in southwestern Rhode Island and has a population of 8,398. The Town of Richmond is also part of Washington County and is adjacent to the Town of Hopkinton. Richmond's population is 8,020. The Hopkinton Regional Community Center is a renovation of a former Department of Public Works garage and an existing community center on the Crandall Field property. This project is funded jointly by Hopkinton and Richmond.

The \$3,126,385 of funding from the CPF CLC Municipal Grant Program will support the creation of the Hopkinton Regional Community Center, that will consist of three office-size rooms equipped



with computers that residents of Hopkinton and Richmond can utilize for interviews or telehealth appointments, a large fitness room, and a large open room that will have a foldable wall and tables set up to be used as a classroom for job training and education programs. The project also includes a breakroom with a refrigerator and microwave as well as two-bathroom facilities.

Hopkinton and Richmond plan to provide interview and resume building workshops, courses in Emergency Medical Technician certification, Cardiopulmonary Resuscitation, Certified Nursing Assistant (CNA) certification, and TIPS® Alcohol Certification, educational workshops like Science,



Technology, Engineering, Arts, and Mathematics, homework clubs, PSAT and SAT workshops, FAFSA® workshops, telehealth space, and elderly nursing checks, at the CLC after the project achieves substantial completion.

Substantial completion of the renovations is currently targeted for December 2025.

Image Captions:

Top left: CLC location (●) map with:

— 15 min walking distance

— 15 min cycling distance

Top middle: Project rendering (exterior)

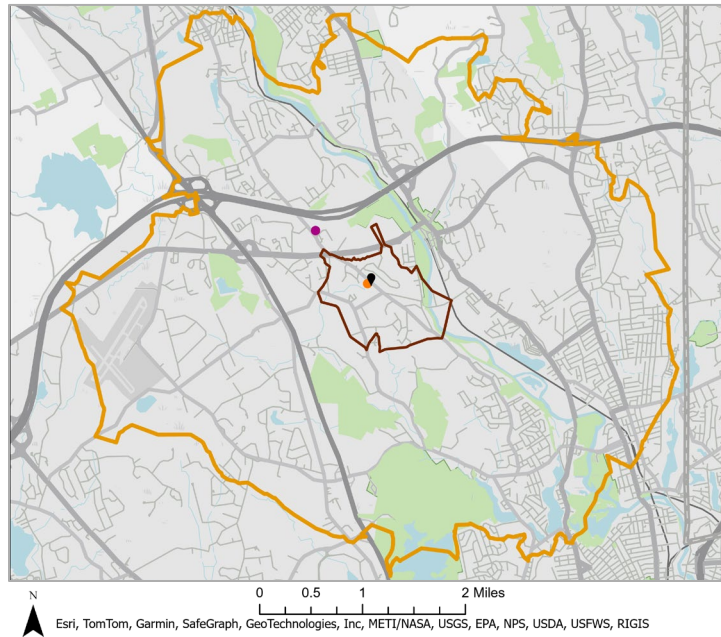
Top right: Mid-renovation interior

● Library

● City Hall

Lincoln, RI Lincoln Learning Center

Status: Under Construction



The Town of Lincoln is part of Providence County in northern Rhode Island and has a population of 23,334. The Lincoln Learning Center is new construction that is co-located with the Lincoln Rescue Department next to the Town Hall and Police Station.

The \$2,000,000 of funding from the CPF CLC Municipal Grant Program will support the creation of the Lincoln Learning Center with a large classroom, three individual work rooms and a small meeting room.

The Town of Lincoln and its partners at the Lincoln Rescue Department, Lincoln Literacy Center, and



the Boys and Girls Club of Rhode Island plan to provide literacy programs, K-12 continuing education, health monitoring seminars and individual workstations for community members.

The Lincoln Learning Center project expects to achieve substantial completion by May 2026.



Image Captions:

Top left: CLC location (●) map with:

— 15 min walking distance

— 15 min cycling distance

Top middle: Project rendering (exterior)

Top right: Project rendering (interior)

● Library
● City Hall

Newport, RI Florence Gray Community Learning Center

Status: Under Construction



The City of Newport and the Town of Middletown are part of Newport County in southeastern Rhode Island and have a combined population of 40,901 (Newport: 24,717, Middletown: 16,184.) The Florence Gray Community Learning Center is a renovation near a residential neighborhood with access to public transportation. This project is funded jointly by Middletown and Newport.

The \$7,527,554 of funding from the CPF CLC Municipal Grant Program will support the creation of seven classrooms, two computer labs, four multi-purpose spaces, one telemedicine room, and associated accessory spaces.



The center will be home to several program partners such as Boys & Girls Club of Newport, FabNewport, Newport Health Equity Zone (HEZ), Turning Around Ministries, and East Bay Community Action Program (EBCAP.) The team is coordinating closely with the current tenants of the building to incorporate their current programs with those of newer program partners to provide services such as visiting nurses who will help monitor residents' health; job fairs and training programs that meet the needs of the Newport and Middletown communities, and multiple education focused programs including FAFSA® coaching and completion events and extended learning opportunities.



Image Captions:

Top left: CLC location (●) map with:

— 15 min walking distance

— 15 min cycling distance

● Library

● City Hall

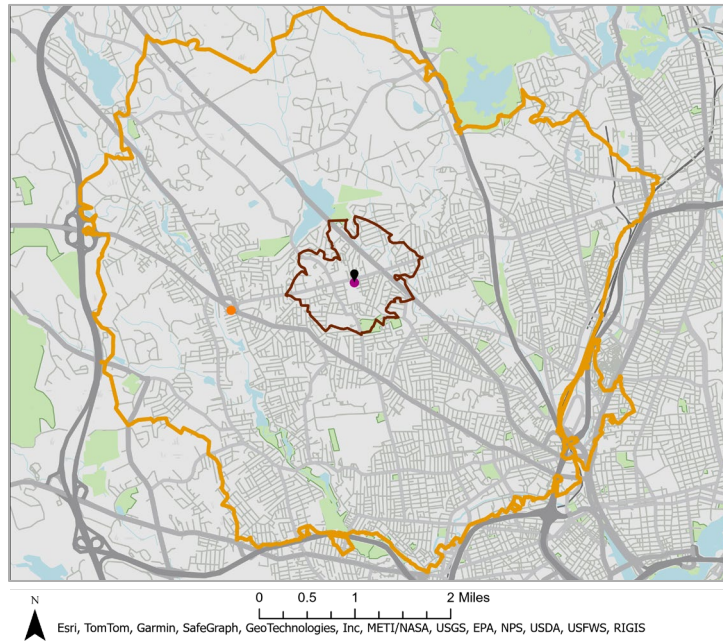
Top middle: Exterior and entrance to Florence Gray Center

Top right: Pre-renovation interior

North Providence, RI

North Providence Community Learning Center

Status: Under Construction



The Town of North Providence is part of Providence County in northern Rhode Island and has a population of 34,114. The North Providence Community Learning Center Upgrades project is a renovation of the North Providence Union Free Library on Mineral Spring Avenue, a municipally owned and operated library.

The \$3,160,894 of funding from the CPF CLC Municipal Grant Program will support the creation of a renovated 6,500 sq.ft outside classroom area, a 900 sq.ft computer room, a 795 sq.ft classroom, and a 350 sq.ft private meeting room, 252 sq.ft storage/copy area, one new and one renovated ADA compliant restroom. Mechanical,



electrical, and fire alarm upgrades for these areas are also included in the project.

The North Providence Union Free Library plans to provide workshop spaces, job training resources, educational opportunities, and telemedicine programming within these newly created classroom and computer room spaces at the library after the project achieves substantial completion.

Substantial completion of the renovations is currently targeted for September or October of 2025.



Image Captions:

Top left: CLC location (●) map with:

— 15 min walking distance

— 15 min cycling distance

● Library

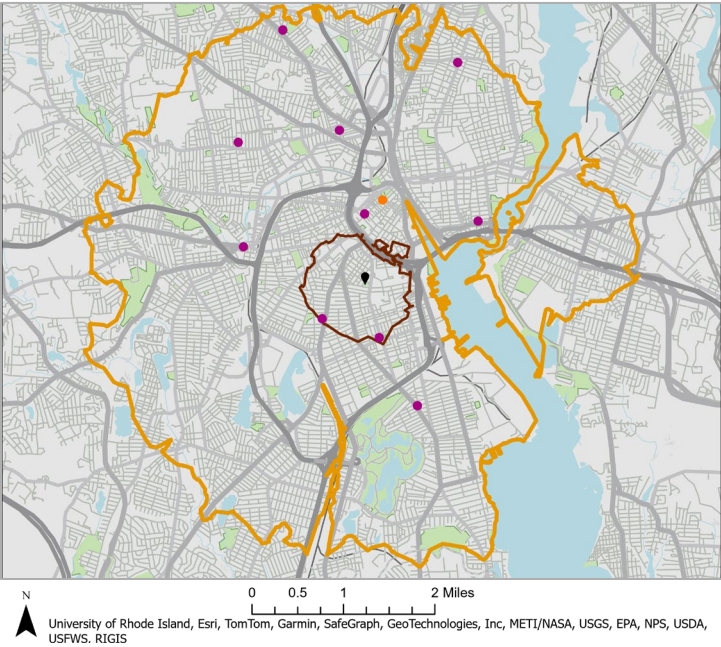
● City Hall

Top middle: Library entrance and exterior

Top right: Mid-renovation interior

Providence, RI Davey Lopes Recreation Center

Status: Pre-Construction



The City of Providence is part of Providence County and is Rhode Island's capital city with a population of 190,792. The CPF CLC Municipal Grant Program project is a renovation of the Davey Lopes Recreation Center located at 227 Dudley St in the heart of the city's Upper South Providence neighborhood, serving a densely populated community with high rates of unemployment and poverty.

The \$8,661,127.56 in funding from the CPF CLC Municipal Grant Program will support the complete renovation of the 9,000-sf facility including ADA upgrades, new paint, flooring, ceiling, and lighting, door replacement, and HVAC



upgrades. Interior areas being renovated are the computer lab, two multipurpose rooms, two private interview rooms, a private telemedicine room, and a kitchenette.

The Providence Department of Recreation will provide the following types of programs and services: computer workstations so residents can search city job boards and review virtual workforce development tools such as resume and cover letter templates; after-school homework support and tutoring services to supplement existing after-school activities; summer camp, reading programs, literacy support, and additional educational programs; and health and social



support programs for residents struggling with addiction, mental and behavioral health support services, and emergency response kits. These services will be provided after the project achieves substantial completion.

Substantial completion of the renovations is currently targeted for June 2026.

Image Captions:

Top left: CLC location (●) map with:

— 15 min walking distance

— 15 min cycling distance

Top middle: Project rendering (exterior)

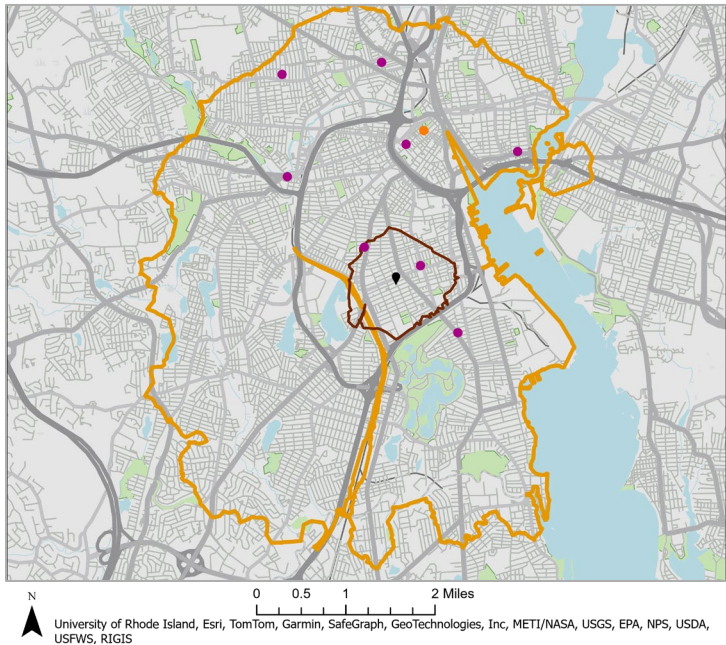
Top right: Pre-renovation interior

● Library

● City Hall

Providence, RI
Elmwood Community Center

Status: Under Construction



The City of Providence is part of Providence County and is Rhode Island's capital city with a population of 190,792. The CPF CLC Municipal Grant Program project is a renovation of the Elmwood Community Center located in the heart of the city's Elmwood neighborhood.

The \$3,273,872.44 of funding from the CPF CLC Municipal Grant Program will support the renovation of the Elmwood Community Center, which has been vacant for multiple years due to failing conditions and lack of funding for necessary repairs and improvements. The City of Providence will use these funds to revitalize the Center into a functional and inviting space for



community health, work, and education programming. The project includes mechanical, electrical, plumbing, and fire protection site work and interior shell space fit-out of the center, audio visual work; furniture, fixtures, and equipment; access control and security; accessibility; electrical infrastructure; and envelope repairs and upgrades. Renovations will create five multi-purpose rooms, a computer lab, a sitting area, private interview rooms, including a dedicated telemedicine room, and an assembly space.

The Providence Department of Recreation plans to provide the following types of programs and services: small business coaching and support;



municipal employee pathway programming; extended learning programs for local youth, focused on advancing student coursework; and drug, alcohol, and tobacco prevention services. These services will be provided after the project achieves substantial completion.

Substantial completion of the renovations is currently targeted for November 2025.

Image Captions:

Top left: CLC location (●) map with:

- 15 min walking distance
- 15 min cycling distance

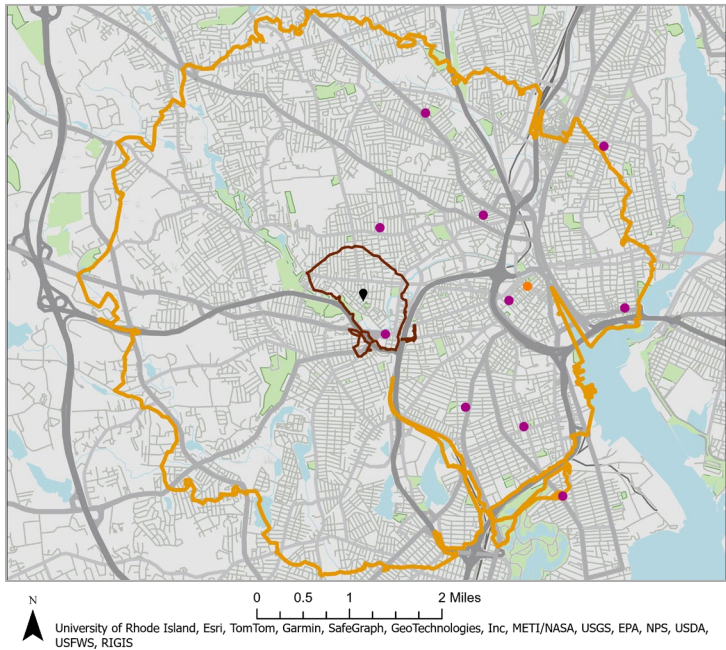
- Library
- City Hall

Top middle: Building exterior

Top right: Mid-renovation interior

Providence, RI Joslin Recreation Center

Status: Pre-Construction



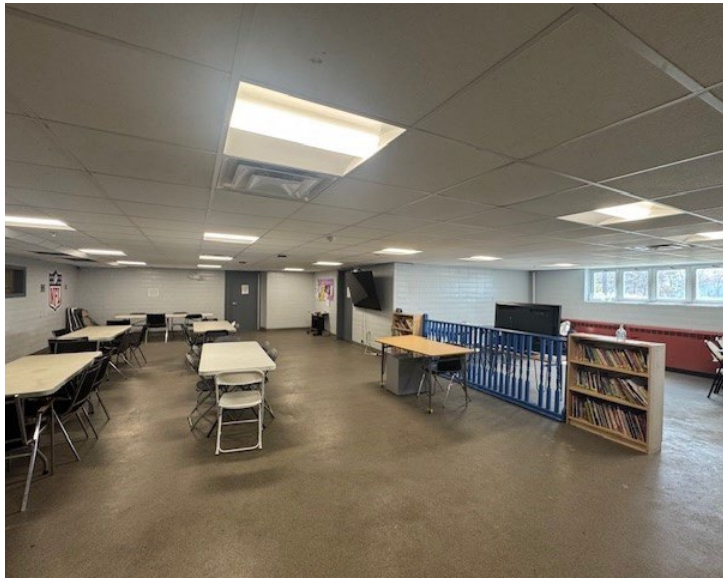
The City of Providence is part of Providence County and is Rhode Island's capital city with a population of 190,792. The CPF CLC Municipal Grant Program project is a renovation of the Joslin Recreation Center located in the heart of the City's Olneyville neighborhood.

The \$4,265,000 CLC Municipal Grant Program grant supports the renovation of the center's two floors which includes ADA upgrades, and new flooring, acoustic ceiling tiles, lighting, paint, and energy efficient light fixtures. There will be HVAC upgrades throughout the first floor to replace antiquated and inefficient heating and cooling systems. A key area of renovation will be the



center's computer lab. This area will contain five small private rooms to be used for virtual job interviews and small community meetings, including one dedicated telemedicine room. In addition, the project will create/renovate three multipurpose rooms to be used for workforce development sessions, educational services like tutoring, or health events.

The Providence Department of Recreation will provide public access to computer workstations where members of the public can search city job boards and review virtual workforce development tools; publicly accessible after-school programming for children that includes homework



help and tutoring support; and drug, alcohol, and tobacco prevention services. These services will be provided after the project achieves substantial completion.

Substantial completion of the renovations is currently targeted for April 2026.

Image Captions:

Top left: CLC location (●) map with:

- 15 min walking distance
- 15 min cycling distance

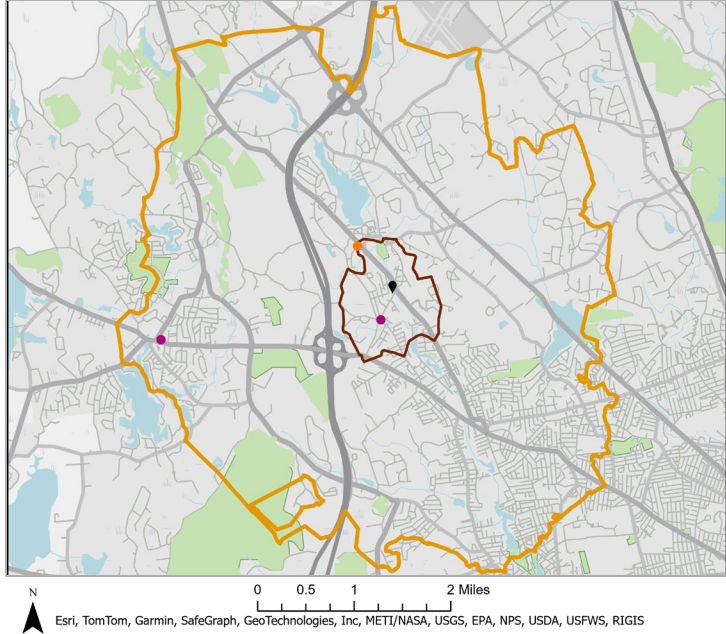
- Library
- City Hall

Top middle: Center entrance and exterior

Top right: Pre-renovation interior

Smithfield, RI
East Smithfield Neighborhood Center

Status: Under Construction



The Town of Smithfield is part of Providence County in north-central Rhode Island and has a population of 22,118. The East Smithfield Neighborhood Center project is a renovation of an existing community center in the Village of Esmond.

The \$2,477,323 in funding from the CPF CLC Municipal Grant Program will support the creation of a new educational lab with office/counseling space, meeting space for seniors, a function hall, and space for social services.

The Town of Smithfield plans to provide preventive health services, a new food pantry, job



training/ GED and a gathering place for seniors at the CLC after the project achieves substantial completion.

Substantial completion of the renovations is currently targeted for August 15, 2025.



Image Captions:

Top left: CLC location (●) map with:

— 15 min walking distance

— 15 min cycling distance

● Library

● City Hall

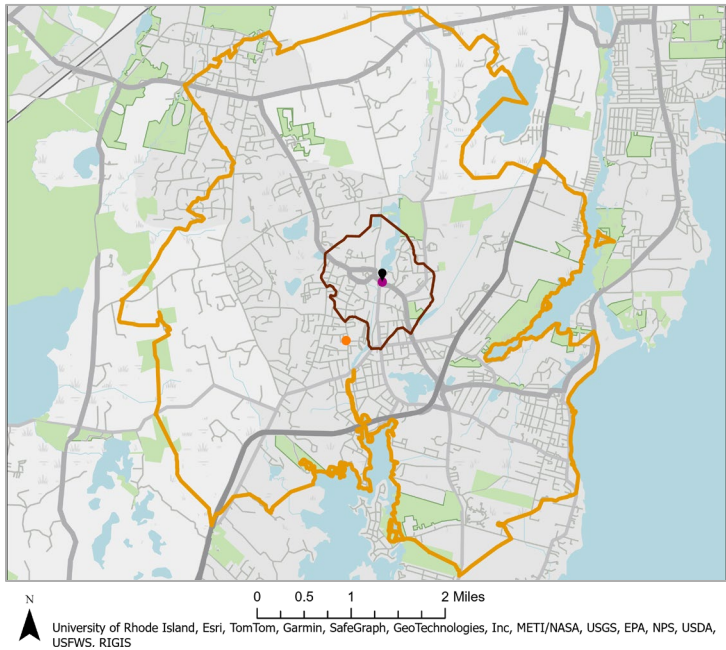
Top middle: Mid-renovation entrance and exterior

Top right: Mid-renovation interior

South Kingstown, RI

Peace Dale Library Community Learning Center Services Expansion Project

Status: Pre-Construction



The Town of South Kingstown is part of Washington County in southern Rhode Island and has a population of 31,931. The Peace Dale Library Community Learning Center Services Expansion Project is a renovation of underutilized space within the Peace Dale Library, a municipally owned and operated library.

The \$2,893,891 of funding from the ARPA CPF CLC Municipal Grant Program will support the build-out of a mezzanine space for the creation of two small multipurpose rooms and a large flexible classroom/multipurpose area. A secondary balcony will be renovated to add a small meeting room and an administrative office. A new ADA-



accessible bathroom will be added, along with another meeting space on the main level for telehealth.

The South Kingstown Public Library will provide programs and resources to support workforce, education, and health monitoring, including one-on-one assistance with telehealth, navigating technology, job search and application help at the CLC after the project achieves substantial completion.

Substantial completion of the renovations is currently targeted for August 2026.



Image Captions:

Top left: CLC location (●) map with:

- 15 min walking distance
- 15 min cycling distance

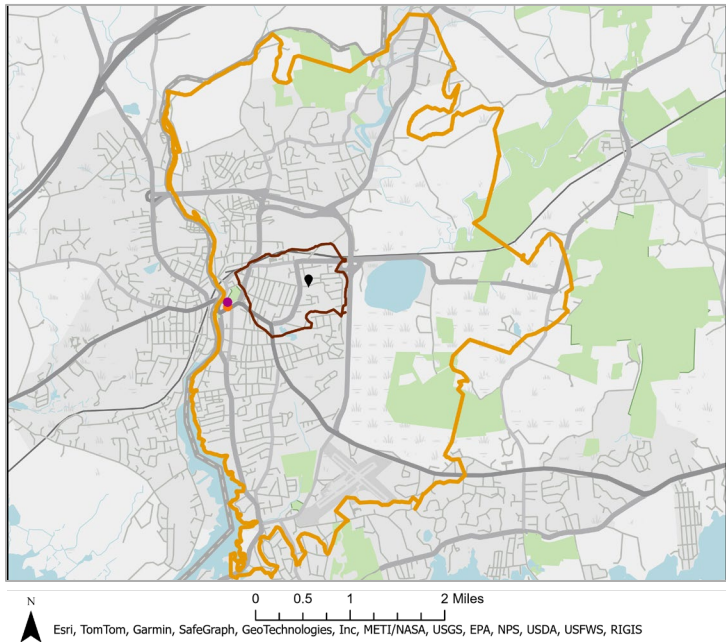
- Library
- City Hall

Top middle: Library entrance and exterior

Top right: Pre-renovation interior

Westerly, RI
Tower Street Community Center

Status: Pre-Construction



The Town of Westerly lies in Washington County in southwestern Rhode Island and has a population of 23,359. The Tower Street Community Center is a new construction project being built on the site of the former Tower Street Elementary School in the town's urban services district.

The \$3,531,655 of funding from the CPF CLC Municipal Grant Program will support the creation of a community center comprising a public lobby, a services/reception area where a navigator employee will be stationed, two classrooms, two multipurpose rooms, three private telehealth/teleconferencing rooms, and five medical exam rooms.



Tower Street Center Inc., the non-profit entity that will operate the facility, will provide free access to Wi-Fi for public use, access to the navigator to assist patrons to learn about and access wrap-around services, private spaces with telehealth and teleconferencing capabilities, and a conference room for use by community groups. The center will house out-of-school educational and mentor program opportunities for school-aged children, along with workforce training programs, and certified nursing assistant and medical assistant training. Healthcare monitoring, access to primary care providers, urgent care services, behavioral health services, and dental services will be provided.



Substantial completion of the construction of the CLC is targeted for October 2026.

Image Captions:

Top left: CLC location (●) map with:

— 15 min walking distance

— 15 min cycling distance

● Library

● City Hall

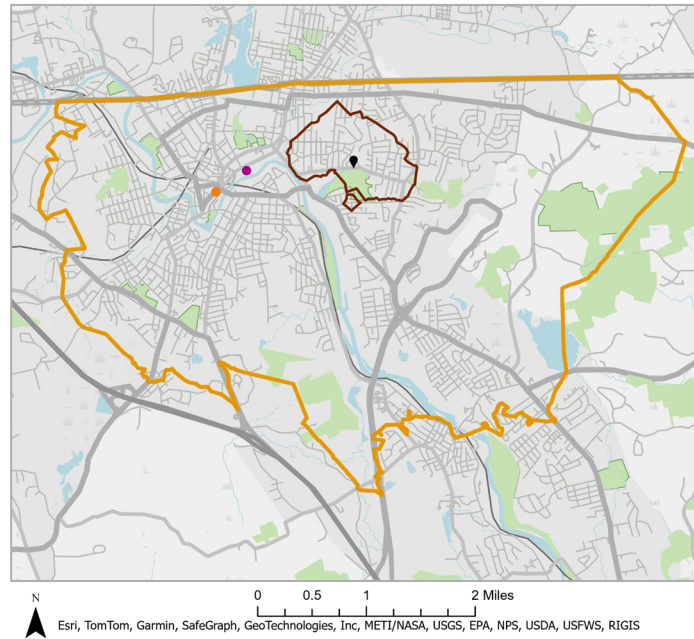
Top middle: Project rendering (exterior)

Top right: Pre-construction demolition and site prep

Woonsocket, RI

Woonsocket Multipurpose Community Learning Center

Status: Under Construction



The City of Woonsocket is part of Providence County in the northern part of Rhode Island and has a population of approximately 43,000. The Woonsocket Multipurpose Community Learning Center is a new construction located on Cass Avenue and is a part of Cass Park.

The \$6,990,500 of funding from the ARPA CPF CLC Municipal Grant Program supports the creation of a 14,000 square foot state-of-the-art center that will provide health monitoring, workforce development, and educational programs for the whole community.

The health component will include blood pressure



monitoring, nutritional coaching, weight loss programs, as well as other monitoring. Workforce development will include in-person and online employment programs at the Center, help with job applications and interviewing techniques, conducting career self-assessments and planning, improving computer literacy to find a job, and enhancing Microsoft Office Skills. Job training will include Certified Nursing Assistant certifications, apprenticeships in the building and construction trades, landscapers, arborists, construction site specialists, and environmental technicians. The Center will host monthly job fairs, targeting specific local industry groups, such as service, manufacturing, hospitality, construction,



non-profit, etc. The education programs will include English as a second language, adult basic education (reading, math, and writing), GED® preparation, transition to college, computer literacy, and Science, Technology, Engineering, and Mathematics classes.

Substantial completion of the construction of the CLC is currently targeted for October 2026.

Image Captions:

Top left: CLC location (●) map with:

— 15 min walking distance

— 15 min cycling distance

● Library

● City Hall

Top middle: Project rendering (exterior)

Top right: Pre-construction site grading and prep

Addressing Critical Needs

The CPF Community Learning Center Municipal Grant Program requires all grantees to prioritize identifying and addressing the community's critical needs in their data gathering, community engagement, and program development. This is done in the following ways:

Program Development: Grantees will assemble objective, reliable data to validate the issues their community learning center will address through targeted programming.

Community Engagement: PRO is requiring grantees to develop a multi-pronged grassroots community engagement strategy that maximizes their outreach to community members. Grantees are planning to conduct community outreach using consistent, frequent, and open communication, in multiple languages where useful, and at various locations, and events, to enable community members to provide maximum input into the community learning center project and its programs.

Access: Projects are required to be ADA accessible to ensure that community members of all physical abilities can use the CPF funded community learning centers. PRO has also provided guidance that the community learning centers must have expansive and flexible operating hours to enable community members to use the facility in accordance with their schedule and convenience.

Affordability: In accordance with Treasury's and PRO's guidance, CPF CLC projects are required to provide free/affordable services to community members. The Treasury-compliant programs that directly and jointly enable work, education, and health monitoring may not charge any more than the minimal amount needed to defray minimal costs of basic supplies or equipment

Labor

All recipients of the CPF Community Learning Center Municipal Grant have committed to using strong labor practices. Representatives from the Rhode Island Department of Labor and Training provided all subrecipients with guidance and materials to help increase awareness of the State's labor law compliance requirements that may apply to these projects. PRO has advised subrecipients to include language requiring equal employment opportunity certification and prevailing wage requirements in their contracts, as well as Davis-Bacon and preference for complying with the Build America, Buy America Act, where applicable.

PRO will require all grantees to submit their contract documentation that demonstrates compliance with the requirement for strong labor standards to promote effective and efficient delivery of quality infrastructure projects while also supporting the economic recovery through employment opportunities for workers.

Community Engagement

Throughout the application process and subaward agreement finalization, PRO required all subrecipients of the CPF CLC Municipal Grant Program to commit to a grassroots multi-pronged community engagement strategy that facilitates ongoing participation from diverse community members through the period of performance which ends on December 31, 2026. Grantees are conducting outreach through emails, websites, paper flyers, tables at town events, surveys, focus groups, town-hall meetings, listening sessions, as well as through partnership with community programming organizations. Several grantees have created dedicated websites to create an online platform for community engagement. URLs to these websites are listed below.

Barrington:

<https://www.barrington.ri.gov/491/Information-on-the-BSCC-Project>

Bristol: <https://rogersfreelibrary.org/clg-project/>

East Greenwich: <https://east-greenwich-ri.civilspace.io/en/projects/swift-community-center-expansion-becoming-a-community-learning-center> [east-greenwich-ri.civilspace.io]

Hopkinton: <https://www.hopkintonri.gov/MPCC>

South Kingstown:

<https://skpl.org/1161/Community-Learning-Center>

The Governor's office hosts and participates in several state-wide engagement efforts and shares regular updates on the CPF CLC Municipal Grant Program with municipal leaders and stakeholders.

PRO shares information about the program and projects through its website which is updated every quarter. The CPF and Community Learning Center webpages on the PRO website can be accessed at:

www.pandemicrecovery.ri.gov/CPF

www.pandemicrecovery.ri.gov/CLC

Several municipalities have already conducted community outreach capitalizing on the various summertime public events in their communities such as local movie nights, Independence Day and Earth Day celebrations, as well as stakeholder engagement meetings focused on the design and programming of the community learning center. These in-person engagement efforts are being complemented by digital and paper surveys, notices, virtual meetings, and online surveys. Additionally, the grantees are committed to develop processes to address grievances received during project construction/implementation which include regular team meetings, leadership oversight, transparent communications, and documentation of grievance. Pictures of a few of these outreach efforts are included below.



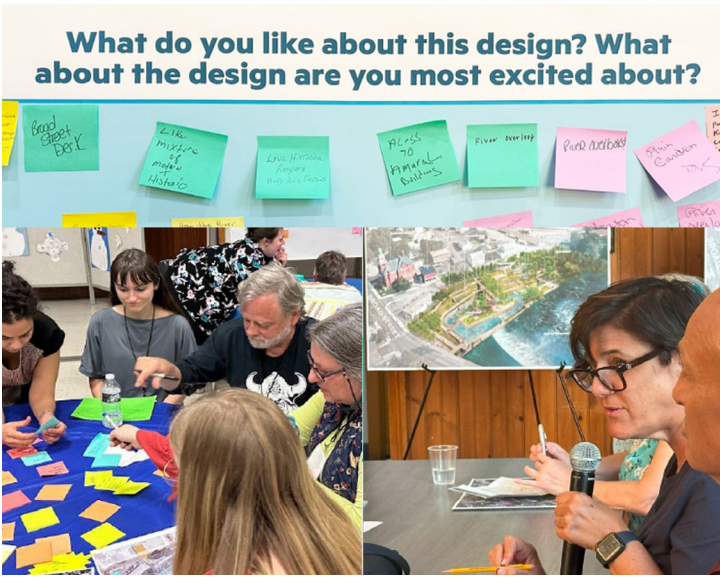
CPF Community Learning Center Community Engagement Efforts



In April, the **Town of Hopkinton** set up a table with renderings of the CLC facility, the floor layout, and a survey at the Artessy event held by the Chariho School district. The event was for three hours, and it gave the team an opportunity to talk to many families in the district about the project.



The **Town of Lincoln** set up booths at various town events such as the 2024 Summer Concert Series pictured above. At these events members of the CLC project team were able to gather input from residents and answer questions about the project.



The **Town of Cumberland** created a multi-month engagement process which included: a community dinner and storytelling event, an in-person design meeting, and a hybrid design refinement meeting. These various events and formats allowed the community multiple opportunities to provide feedback into the CLC project at different points in the process.

CPF Community Learning Center
Community Engagement Efforts



The **Town of South Kingstown** created a multi-pronged community outreach strategy that used flyers, social media, surveys, local event tabling (as pictured above), and focus groups to gather community input and address questions and concerns about the CLC project.



The **City of Woonsocket** conducted in person and online surveys and presented the project at several local public forums.



The **Town of Barrington** shares updates about the CLC project through its newsletters and calendars and has conducted public meetings and workshops to engage the community in the CLC project.

The Rhode Island 2025 Performance Report was prepared by the State of Rhode Island's Pandemic Recovery Office.

In case of any questions, please reach out to CPF.PandemicRecovery@doa.ri.gov

This project is being supported, in whole or in part, by federal award number CPFFN00169 awarded to The State of Rhode Island by the U.S. Department of Treasury.